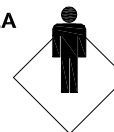


MODEL NAME: CAMBOURNE NEST OF TABLES

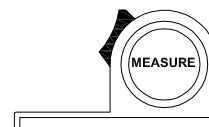
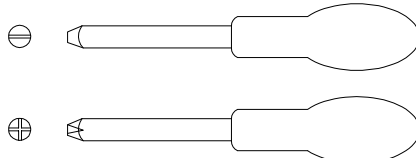
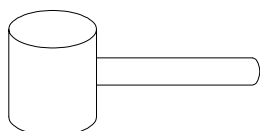
60min

APPROXIMATE ASSEMBLY TIME

1 PERSON FOR ASSEMBLY

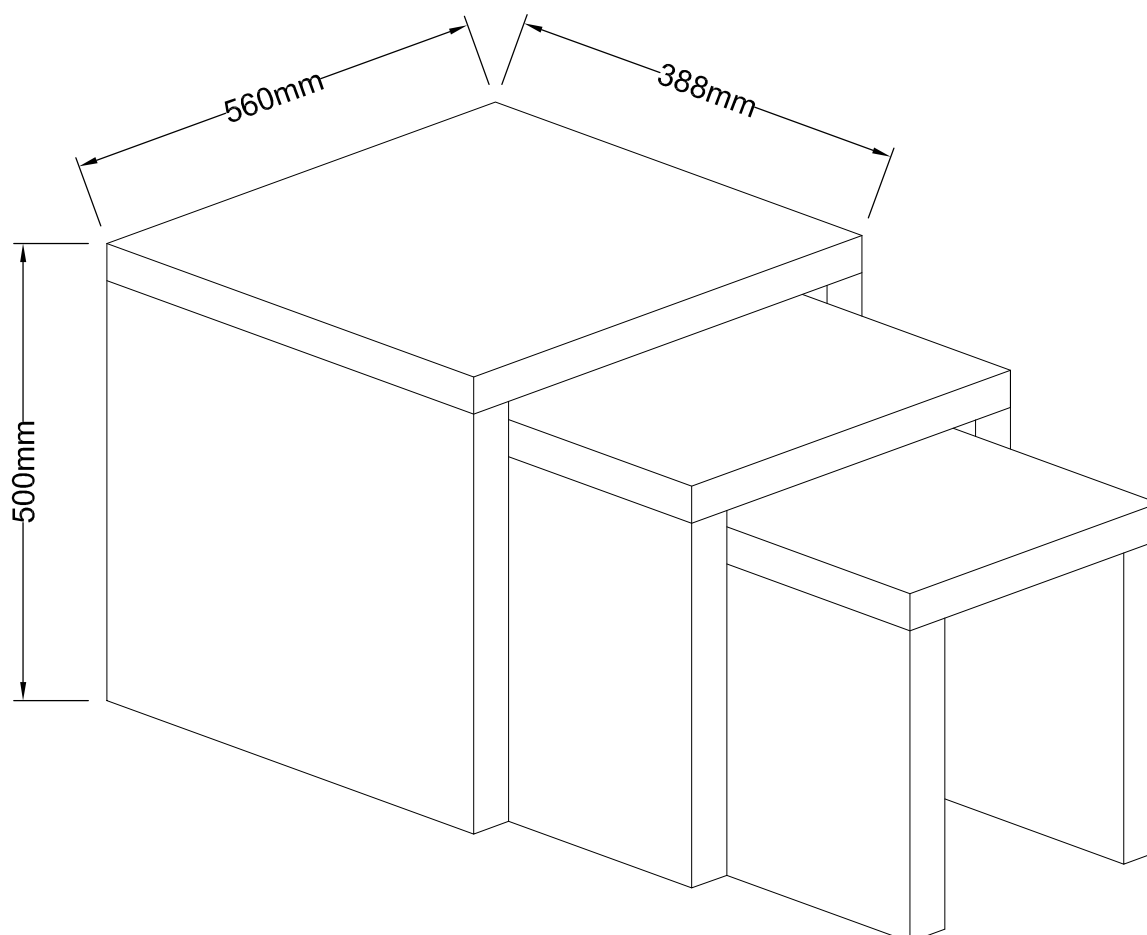
FLOOR AREA
1.0M X 1.0M

REQUIRED ASSEMBLY SPACE



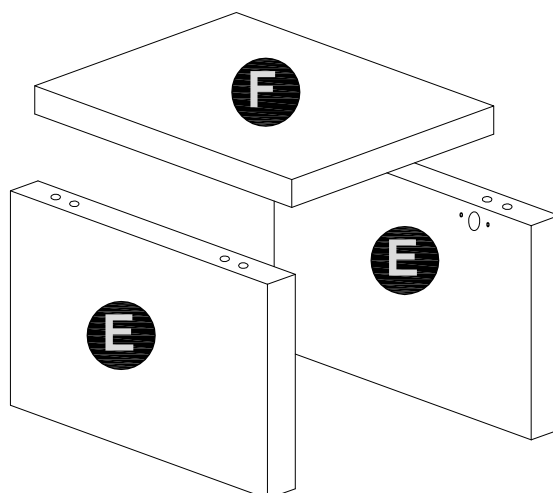
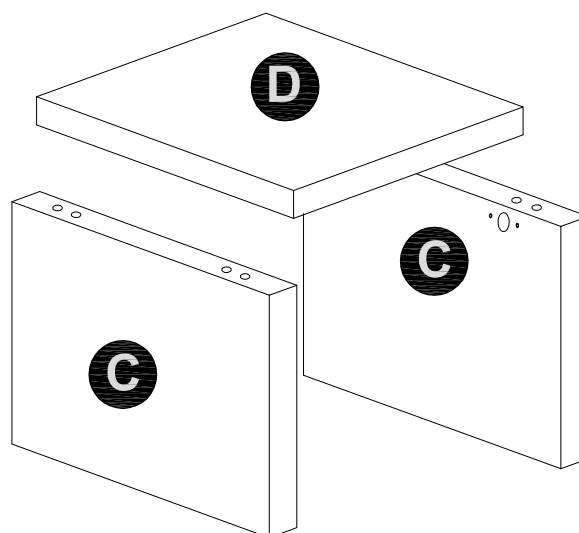
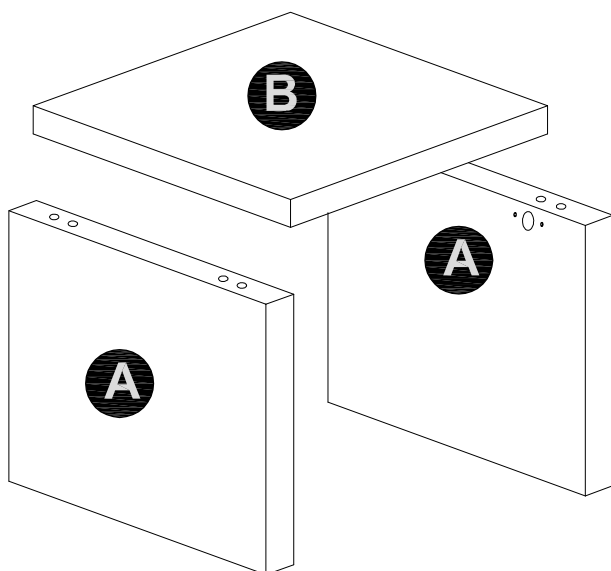
REQUIRED ASSEMBLY TOOLS

ASSEMBLED DIMENSIONS


FOR DOMESTIC USE ONLY
NOTE : THE MAXIMUM WEIGHT THIS PRODUCT CAN HOLD UP TO IS 25 KGS.

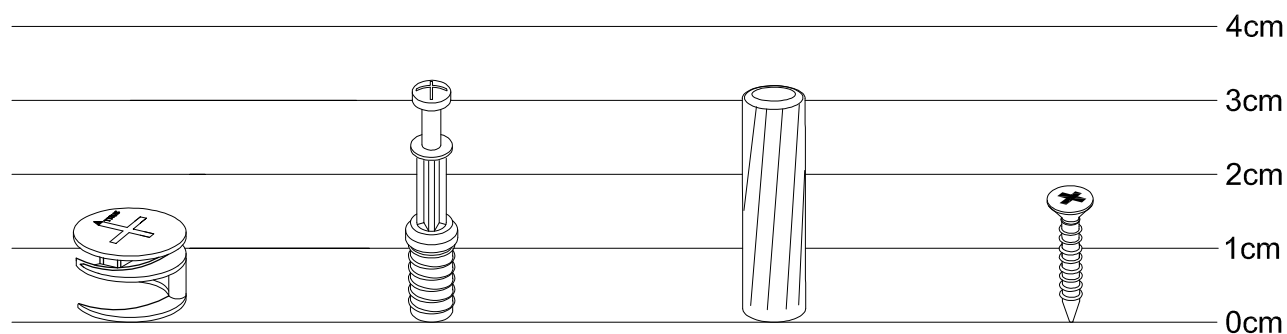
**MODEL NAME: CAMBOURNE
NEST OF TABLES**

NO.	PART LIST	QTY	NO.	PART LIST	QTY
(A)	LARGE SIDE PANEL	2	(E)	SMALL SIDE PANEL	2
(B)	LARGE TOP PANEL	1	(F)	SMALL TOP PANEL	1
(C)	MEDIUM SIDE PANEL	2			
(D)	MEDIUM TOP PANEL	1			

PARTS LIST

MODEL NAME: CAMBOURNE NEST OF TABLES

HARDWARE LIST

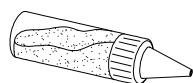


12X
Dia.15mm
1
CAM-LOCK

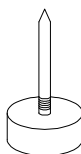
12X
M6.5
2
CAM BOLT

12X
Dia.8 x 30mm
3
WOOD
DOWEL

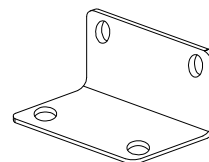
48X
M3.5 x 16mm
4
FLAT HEAD
SCREW



1X
5
GLUE 10CC



12X
6
FOOT



12X
7
L - BRACKET

	MODEL NAME: CAMBOURNE NEST OF TABLES
--	---

Top Tips before you start!

1. Please check that all parts are present before you start the assembly of your furniture.
2. For ease and speed of assembly, we recommend that before you commence each step of the assembly, that you identify all the parts required for that step.
3. For larger items, please ensure that you have sufficient space and people (as indicated on page 1) to assemble your product safely
4. We recommend that, where possible, all items are assembled near to the area in which they will be placed in use, to avoid moving the product unnecessarily once assembled.
5. For the protection of your furniture, particularly items of high gloss finish, we recommend that the product is placed on a protected surface during assembly to prevent any damage.
6. During assembly please take care not to over-tighten any fittings, as this may damage the product.
7. Always place the product on a flat, steady and stable surface.
8. Do not sit or stand on the product.
Do not use the product as a stepladder.
9. This product is intended for indoor, household use only as it is non industrial product.
10. This product is constructed from re-inforced hollow board. Excessive pressure will cause irreparable damage. Please do not kneel on any part of this product during assembly.

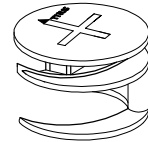
Care and Maintenance of your Furniture

- Please periodically check all fittings and re-tighten as necessary.
- To clean your item, please use a damp cloth and wipe clean.
- Never allow any kind of liquid to remain on your furniture.
- Please do not place hot items (e.g. hot drinks) directly on to the wood surface.
- Please do not drag and pull your furniture.

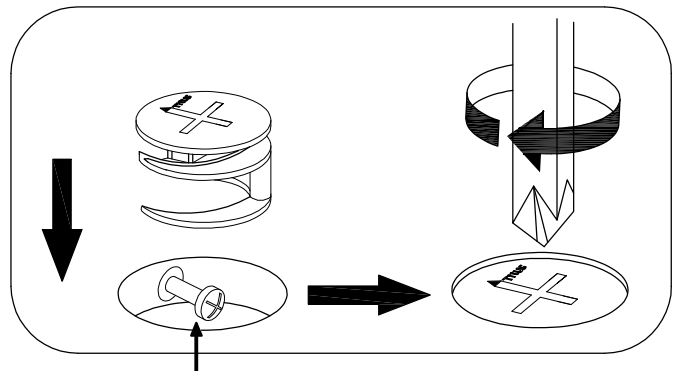
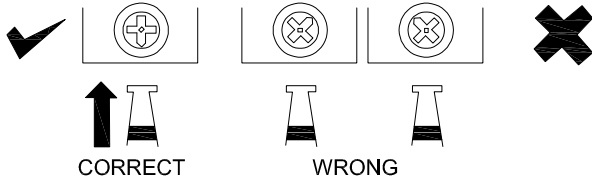
MODEL NAME: **CAMBOURNE
NEST OF TABLES**

SPECIAL TIPS FOR FITTING CAM-LOCKS AND CAM BOLT

CAM-LOCK



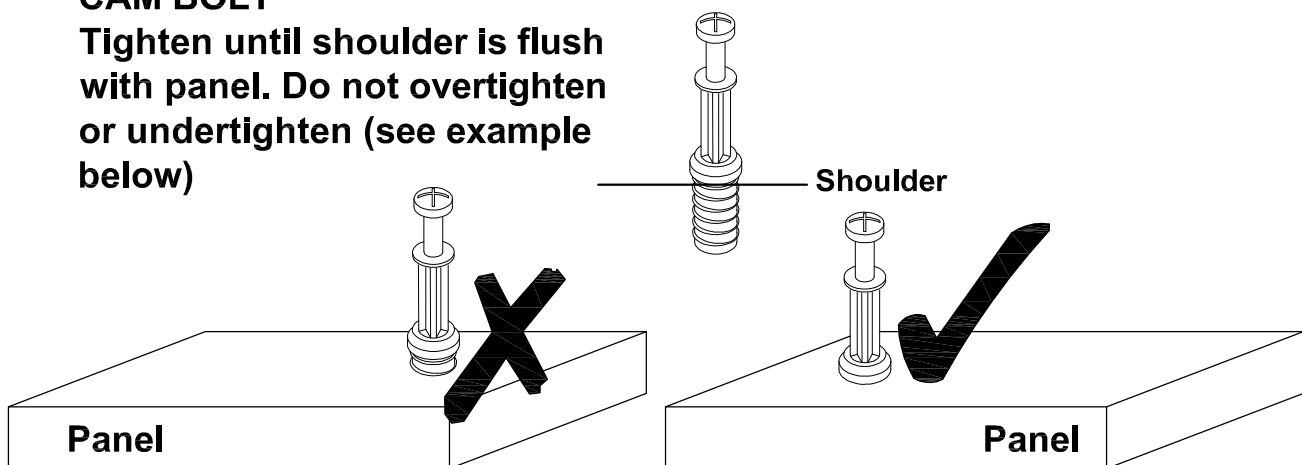
WHEN FITTING CAM-LOCK
ENSURE STARTING POSITION IS CORRECT
BEFORE YOU INSERT CONNECTING CAM BOLT
TURN CLOCKWISE UNTIL SECURE



Cam bolt head needs to be in centre

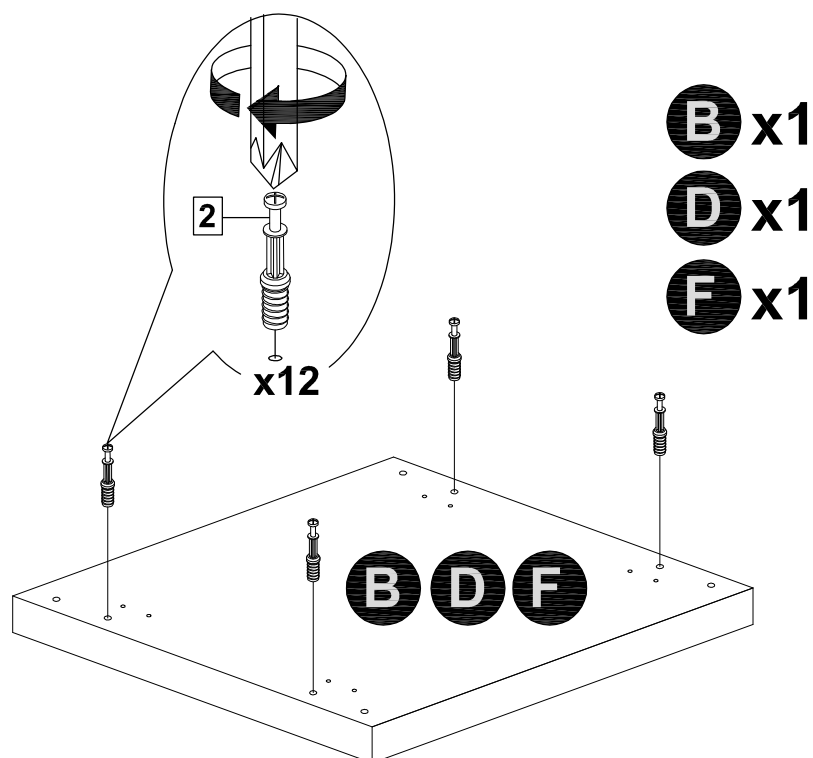
CAM BOLT

**Tighten until shoulder is flush
with panel. Do not overtighten
or undertighten (see example
below)**

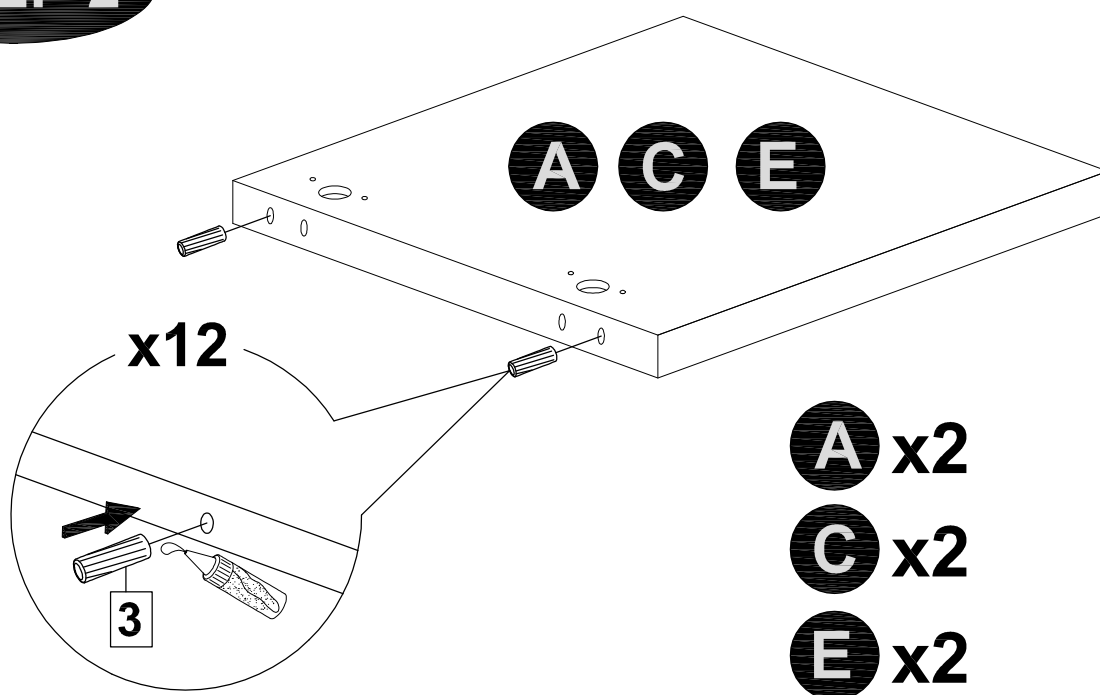


MODEL NAME: **CAMBOURNE**
NEST OF TABLES

STEP 1

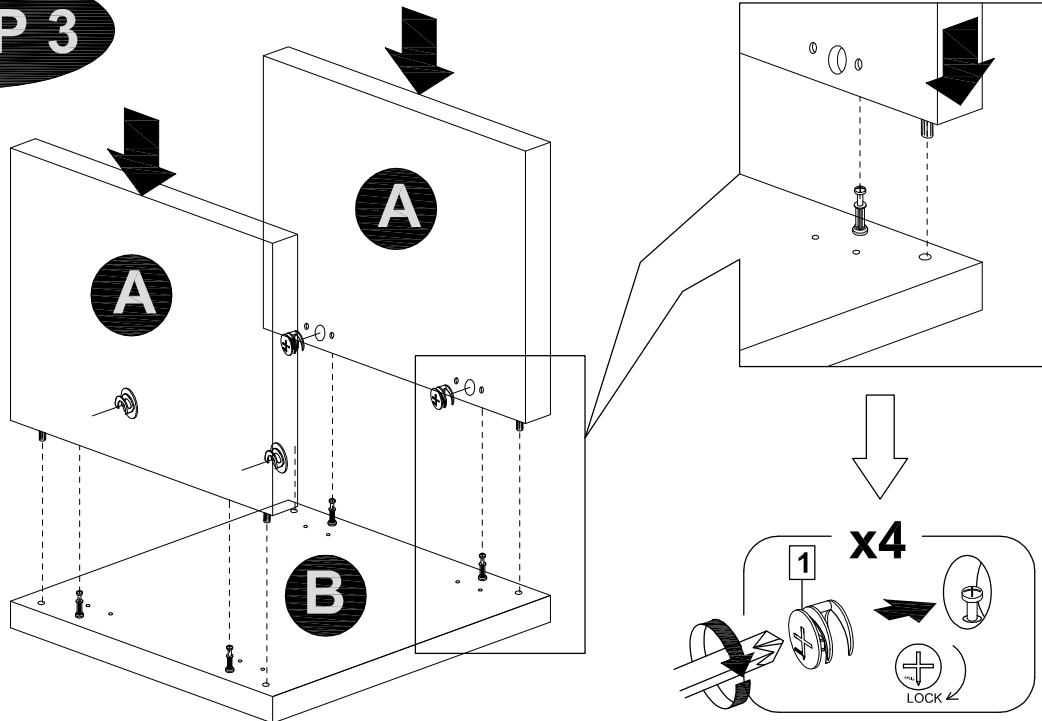


STEP 2

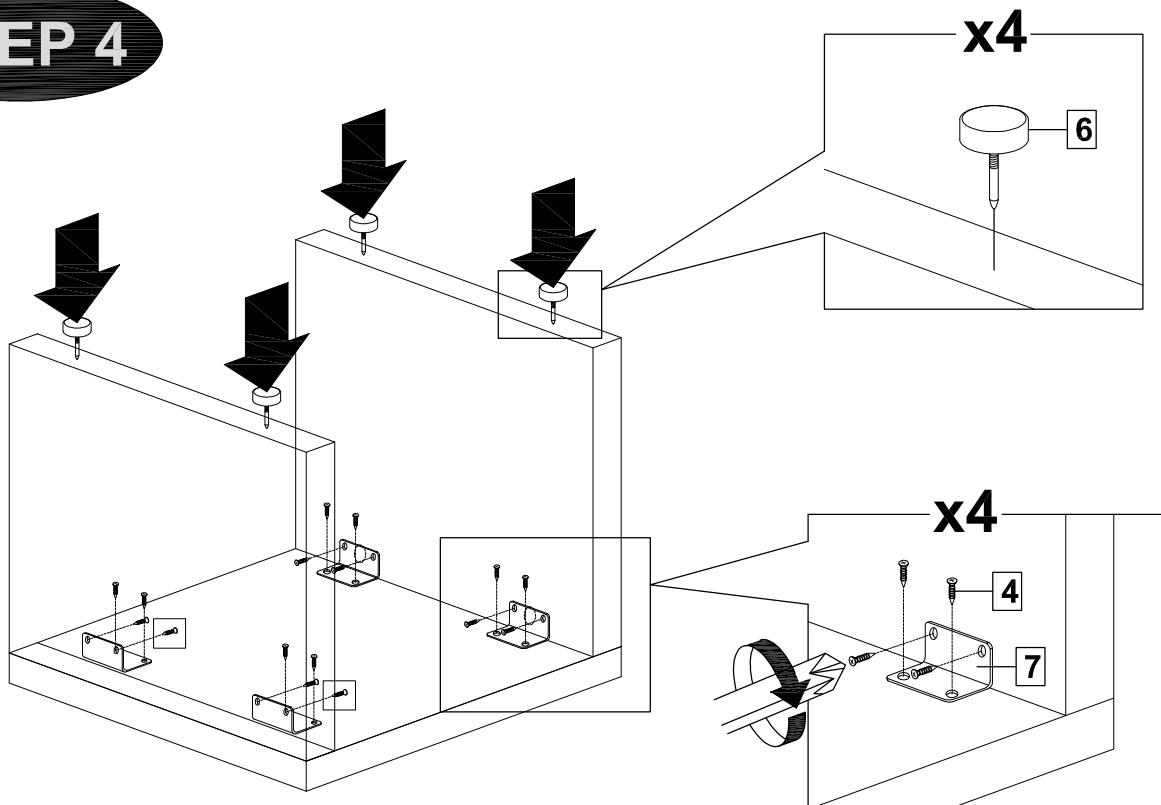


MODEL NAME: **CAMBOURNE**
NEST OF TABLES

STEP 3

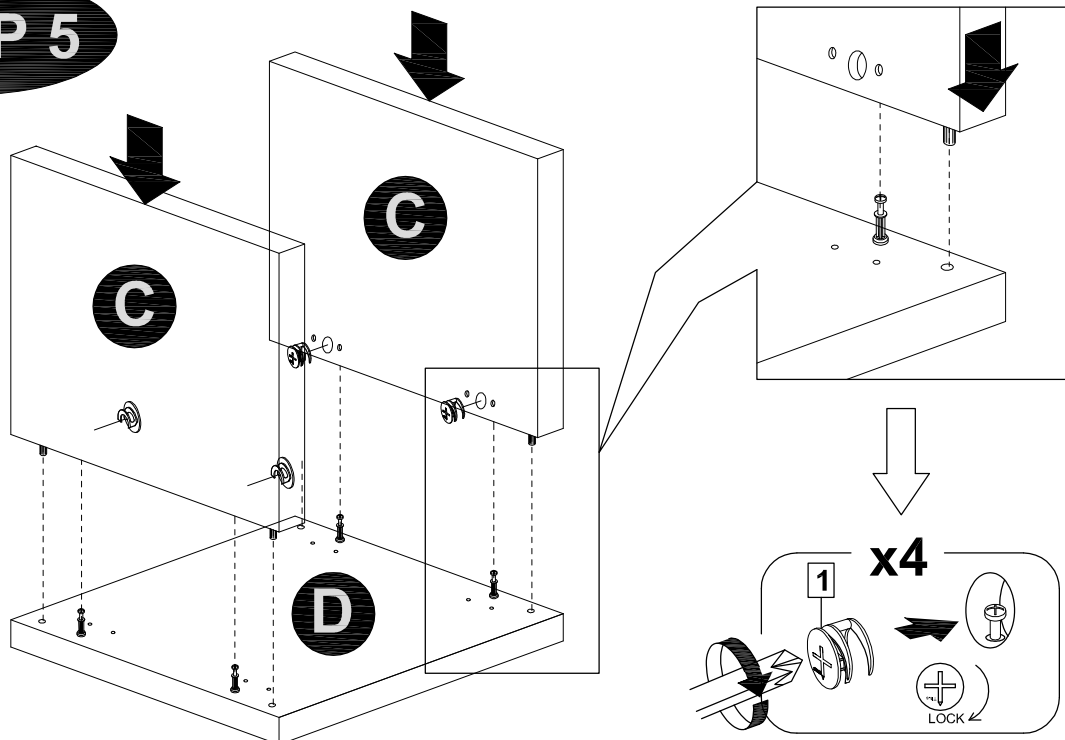


STEP 4

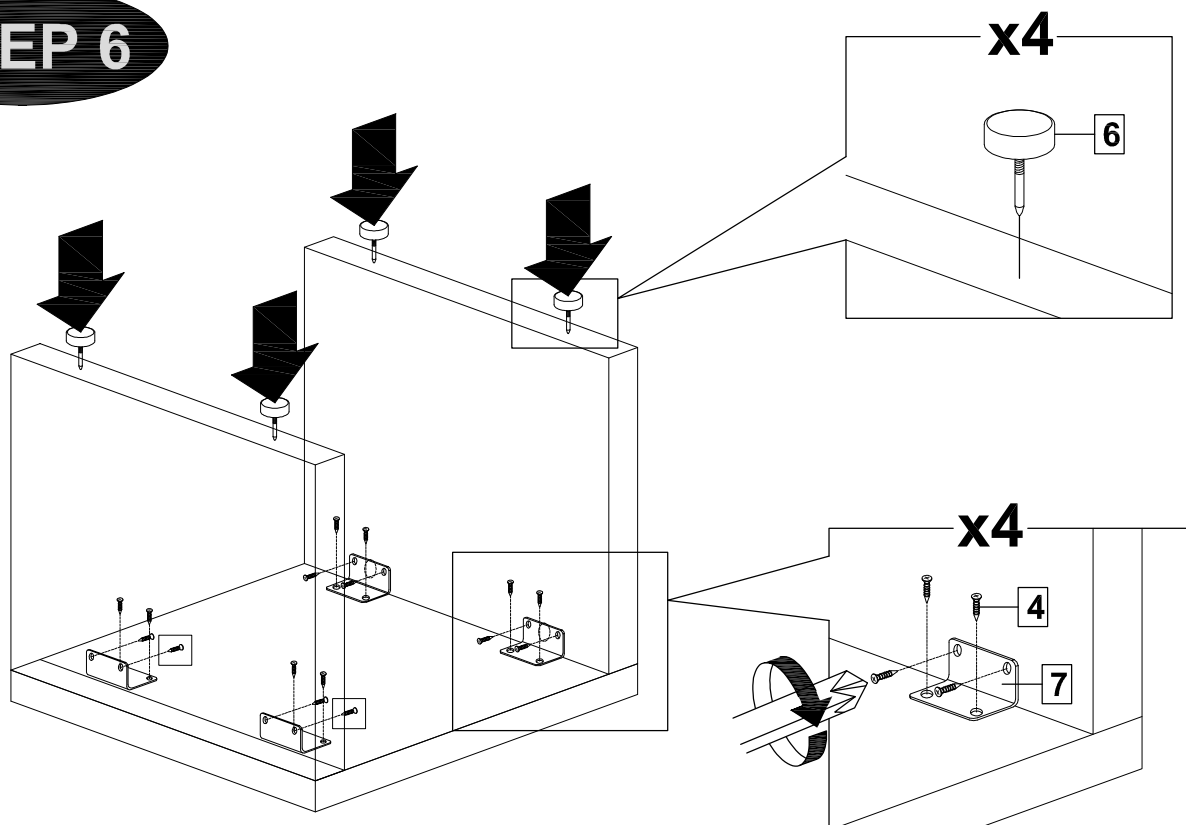


MODEL NAME: **CAMBOURNE
NEST OF TABLES**

STEP 5

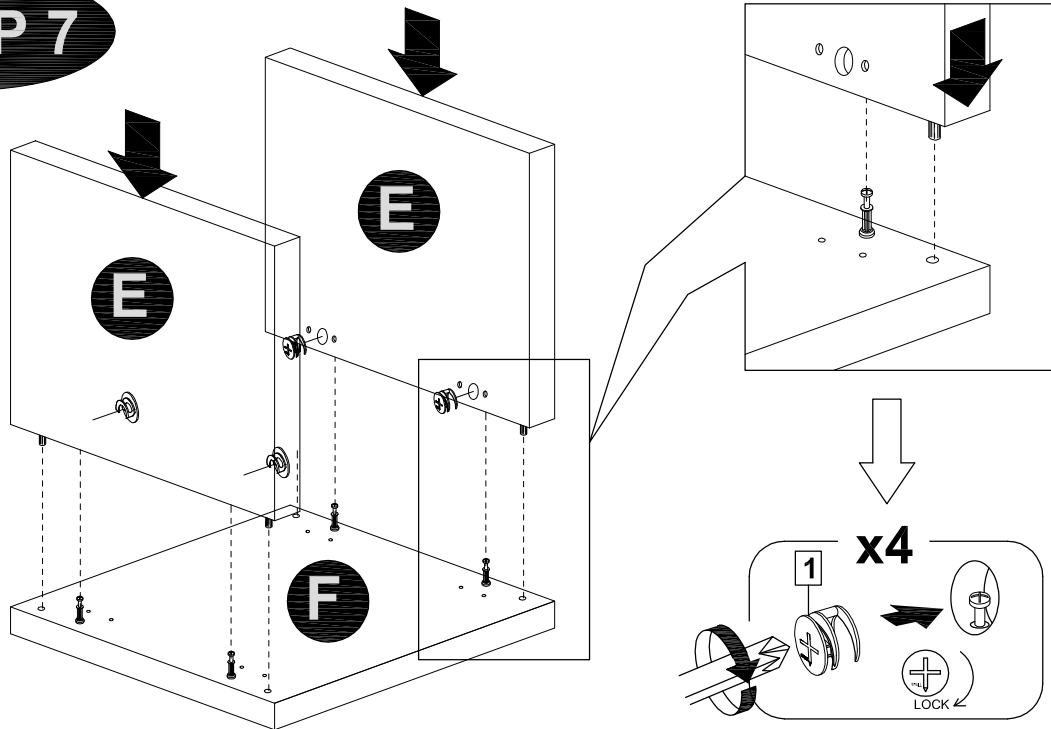


STEP 6

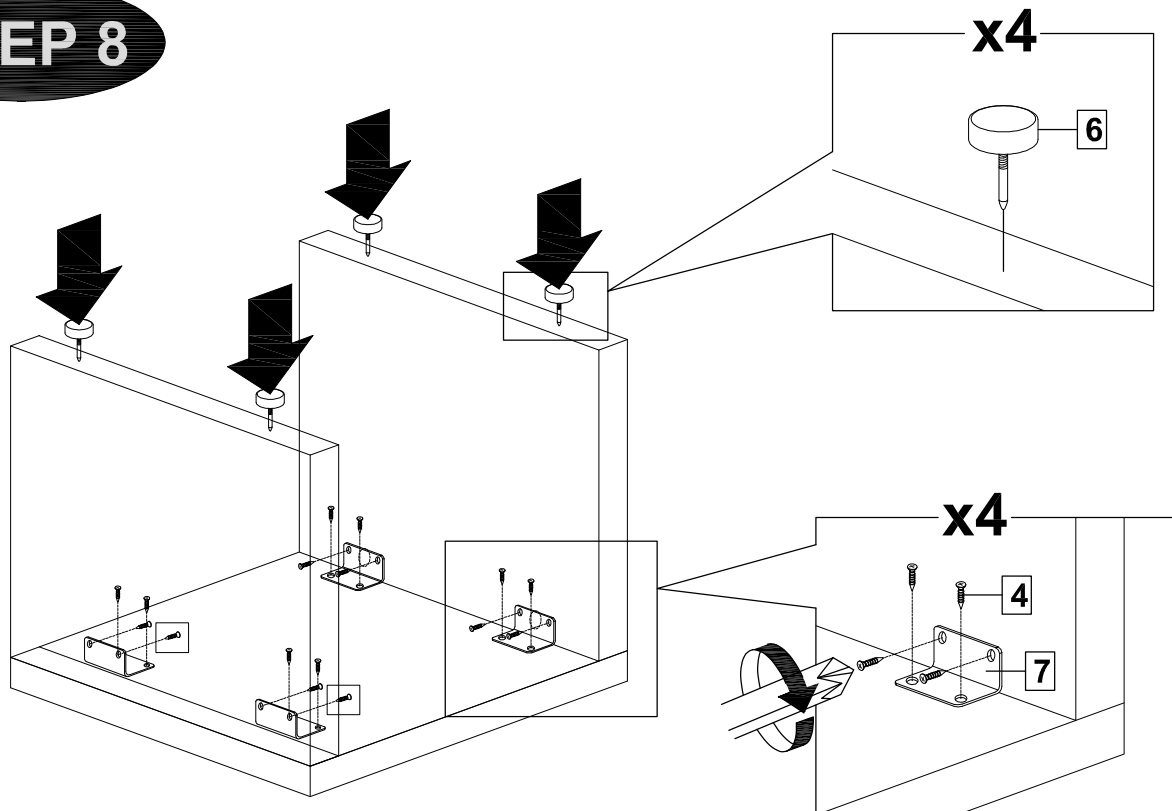


MODEL NAME: **CAMBOURNE**
NEST OF TABLES

STEP 7



STEP 8



MODEL NAME:

CAMBOURNE

NEST OF TABLES

STEP 9

