

Birlea

Suppliers of inspiration

Assembly Instructions

*Thank you for
purchasing a
Birlea product.*

For a chance to win a *Love 2 Shop* voucher simply post a picture of your new product on your preferred social channels tagging Birlea Furniture and using the hashtag **#ShareYourStyle** and **#Birlea**. One winner will be selected at random each month.

To view our full terms and conditions please visit our website. www.birlea.com

Are you happy with your purchase?

Yes: That's great, we would love to hear more from you. Please leave us a review on our social media channels or Trustpilot. Your feedback will be greatly appreciated.

No: If for any reason there is something missing, indifferent or incorrect with your order, please contact the retailer you purchased the item from. We will work with the retailer to resolve your issue as quickly as possible.



www.birlea.com

ASSEMBLY INSTRUCTIONS **ARLO-4 DRAWER CHEST**

IMPORTANT : READ THESE INSTRUCTIONS CAREFULLY BEFORE ATTEMPTING TO ASSEMBLE OR USE YOUR ARLO-4 DRAWER CHEST.

PLEASE KEEP THESE INSTRUCTIONS FOR FUTURE REFERENCE.

ASSEMBLY:

Assembly should be carried out with this item laying flat, not standing upright.

Assemble on a soft, clean surface to prevent damages.

To erase the numbers printed on the pieces, use the rubber inside the accessories pack.

HEALTH & SAFETY:

DO NOT use this product if any parts are missing, damaged or worn.

DO NOT use this product unless all fixings are secured.

Always use on a level, even surface.

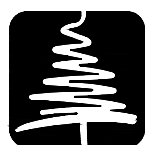
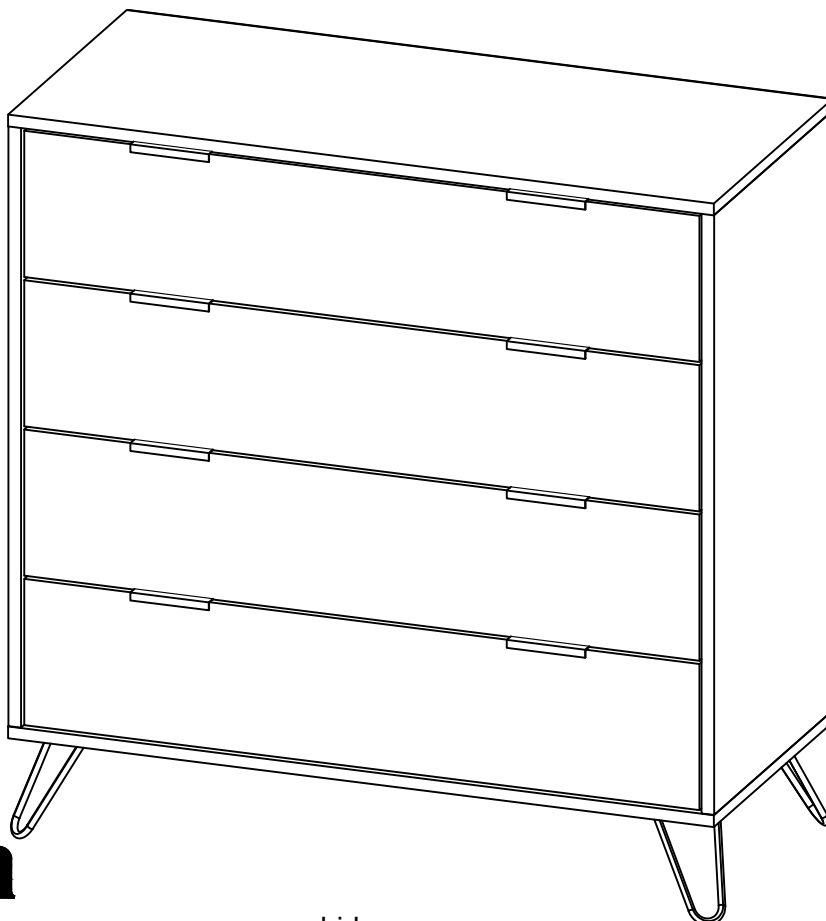
CARE & MAINTENANCE:

Periodically check all screws & fixings to ensure they are secure.

DO NOT push this product as this will cause damage.

Always lift this product with two people to repositions.

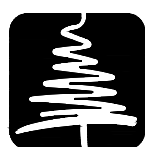
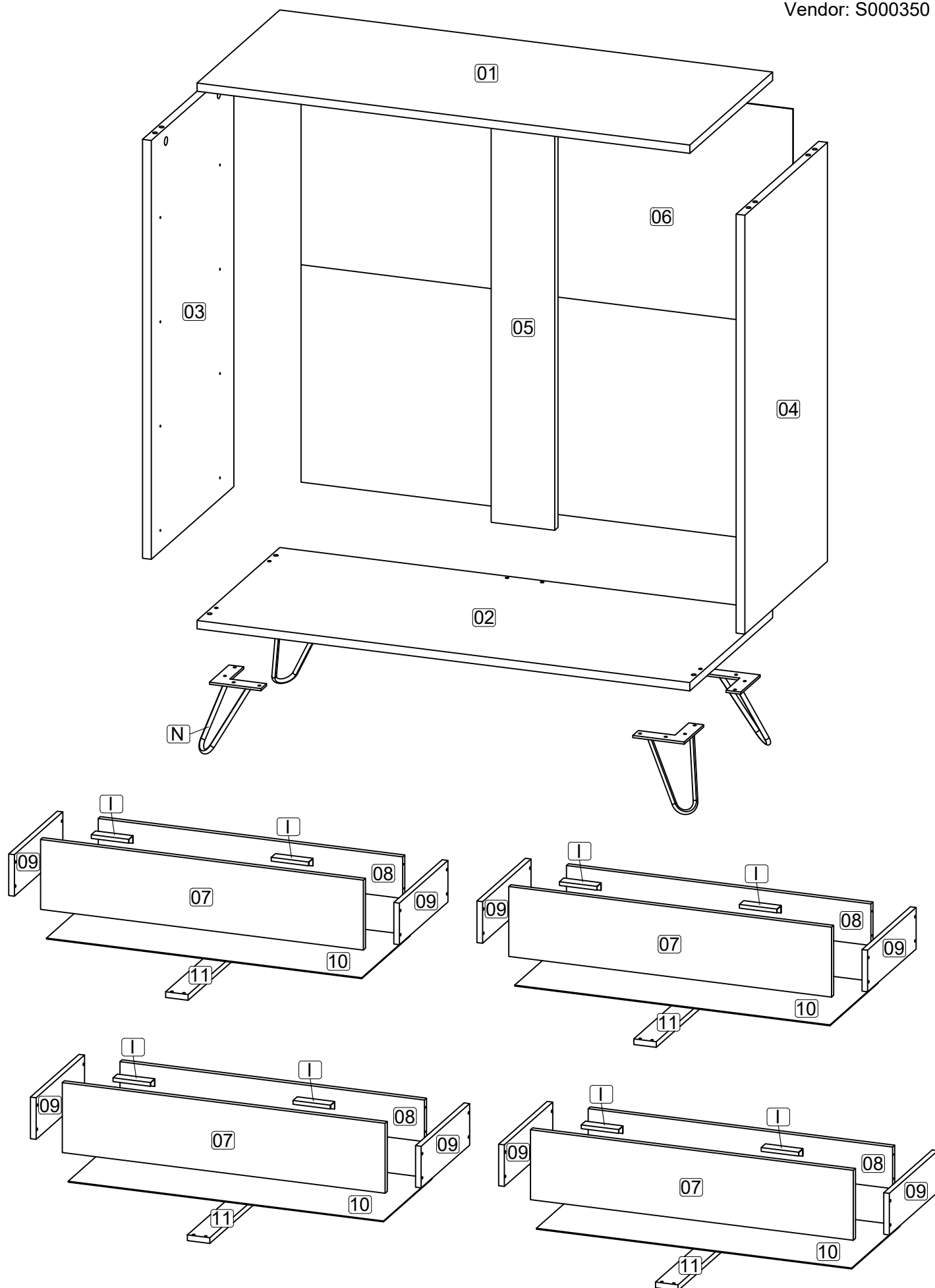
Keep any sharp objects away from this product.



Birlea

Suppliers of inspiration

www.birlea.com



Birlea

Suppliers of inspiration

Parts List

| Part | Description | Box | Qty |
|------|----------------------|-----|-----|
| 01 | Top panel | 1 | 1 |
| 02 | Bottom panel | 1 | 1 |
| 03 | Side panel (Left) | 1 | 1 |
| 04 | Side panel (Right) | 1 | 1 |
| 05 | Back bone | 1 | 1 |
| 06 | Back panel | 1 | 1 |
| 07 | Drawer front | 2 | 4 |
| 08 | Drawer back | 2 | 4 |
| 09 | Drawer side | 1 | 4 |
| | | 2 | 4 |
| 10 | Drawer bottom | 2 | 4 |
| 11 | Drawer bone | 1 | 2 |
| | | 2 | 2 |

Hardware List (BOX 1)

| Part | Description | Qty |
|------|---------------------------------|-----|
| A1 | Cam lock | 6 |
| A2 | Minifix screw | 6 |
| A3 | Plastic cap | 6 |
| B | M8 x 30mm Wood Dowel | 8 |
| C | M6 x 50mm CSK Cap Wood screw | 6 |
| D | Allen key M4 | 1 |
| E | M3 x 12mm C.B Screw | 16 |
| F | M3.5 x 16mm C.B Screw | 66 |
| G | M4 x 25mm C.B Screw | 16 |
| H | M4 x 38mm C.B Screw | 32 |
| I | Handle em 0071 | 8 |
| J | 5/8 Nail | 70 |
| K | 8" x 1" PP tape | 2 |
| L | Wall plug | - |
| M1 | 14" Drawer slide (Left / Right) | 8 |
| M2 | 14" Drawer slide (Left / Right) | 8 |
| N | Metal leg | 4 |

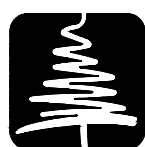
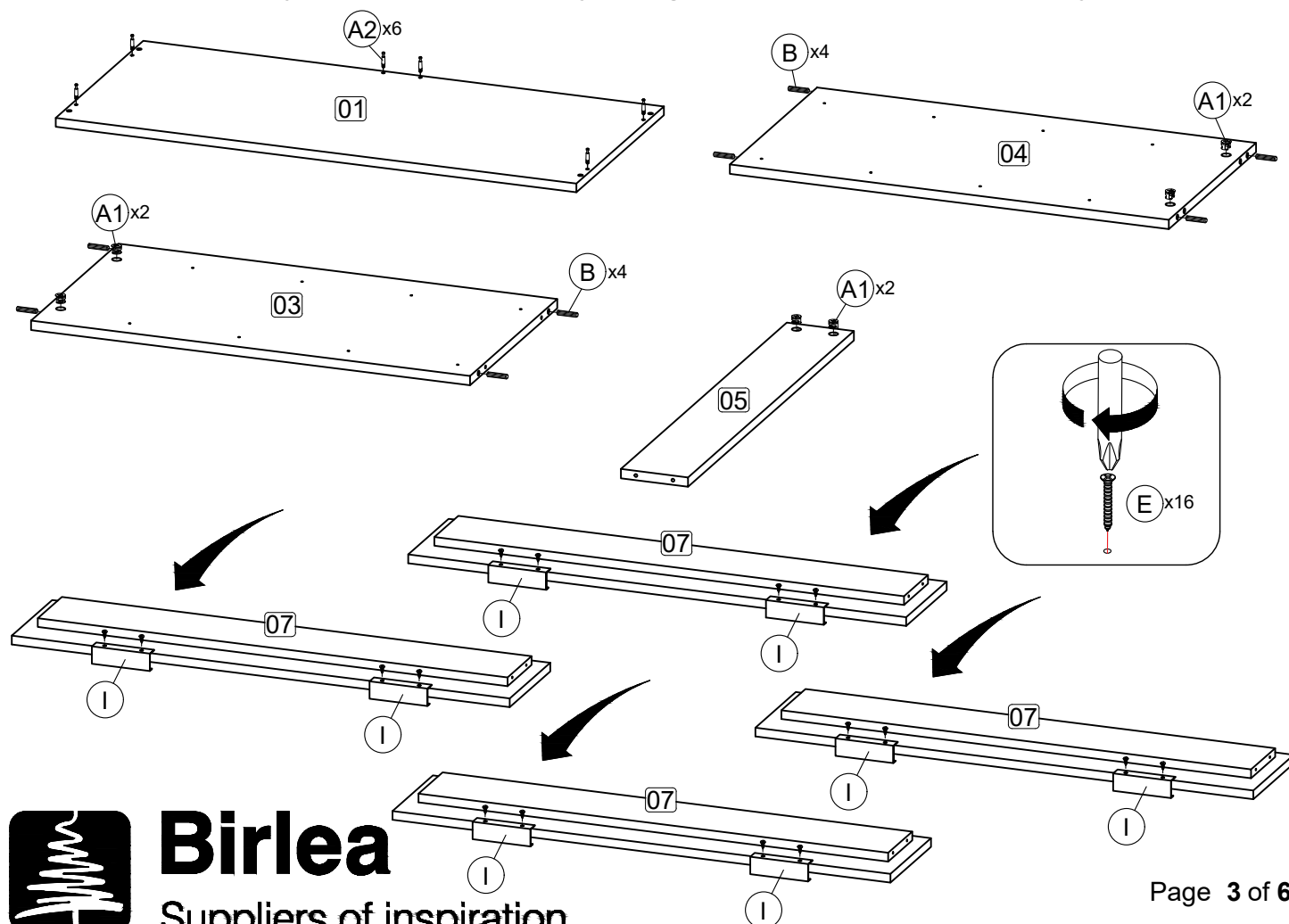
**** You will need a small mallet and a screwdriver for assembly.**

**** Some screws and wooden dowel may remain.**

**** Note : To secure the item to the wall, hardware H (2 pcs) and L (2 pcs) are not provided.**

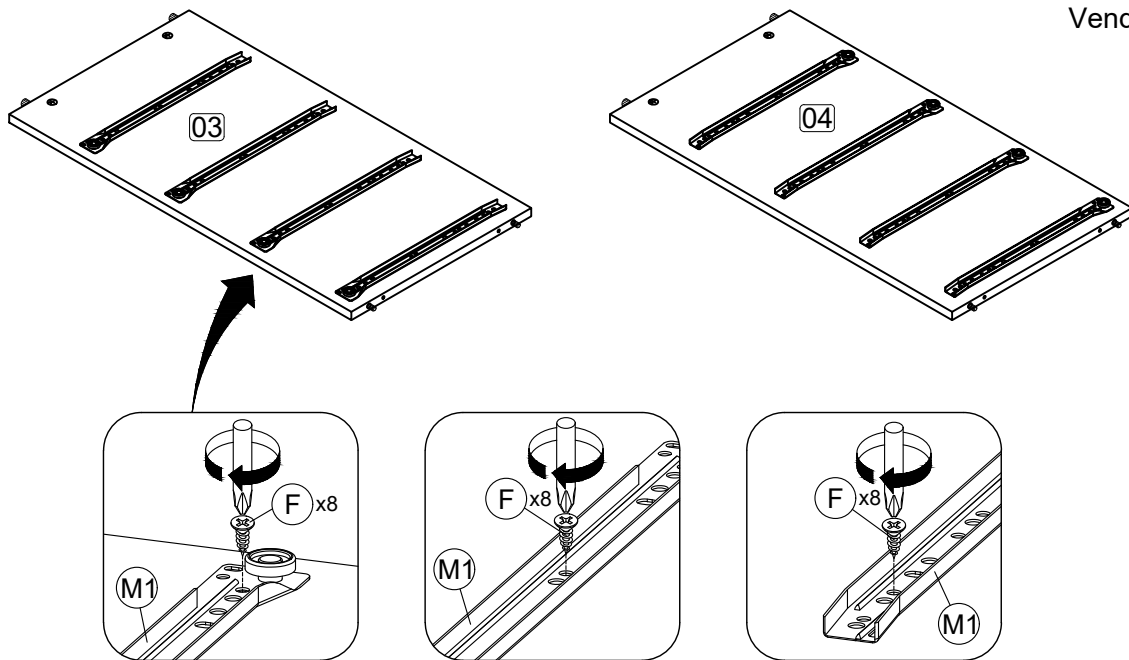
Step 1: Prepare these parts for assembly using hardware parts A1, A2, B, D, E, F, I and M1.

DO NOT use any power tools as this may damage the frame and will invalidate any claim.



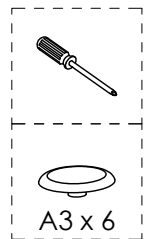
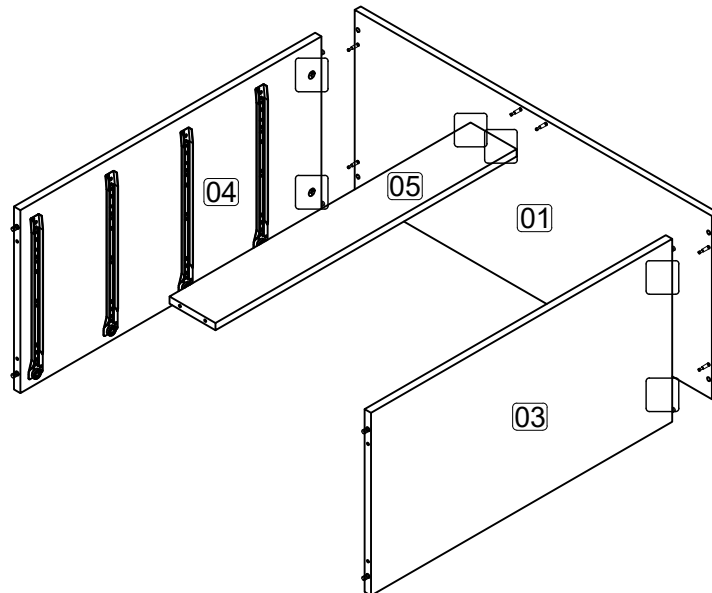
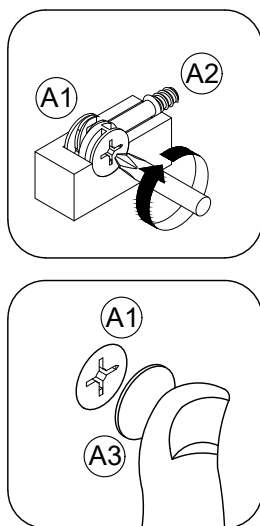
Birlea

Suppliers of inspiration



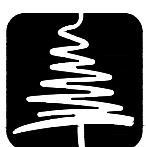
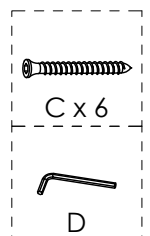
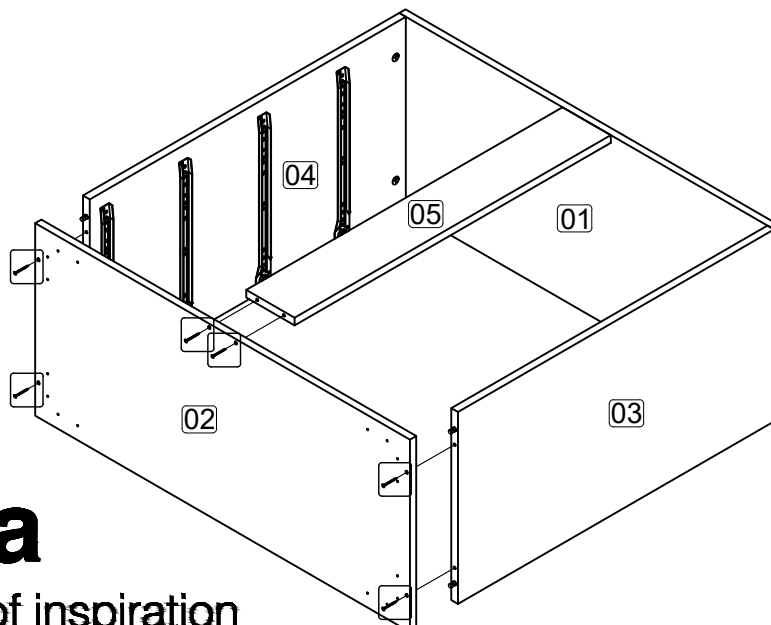
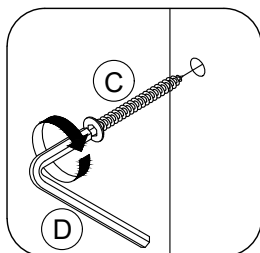
Step 2: Attach top panel (1) to side panel (3), (4) and back bone (5) using hardware A1 and A2 with a screwdriver (not provided).

DO NOT use any power tools as this may damage the frame and will invalidate any claim.



Step 3: Attach bottom panel (2) to side panel (3), (4) and back bone (5) using hardware C and D.

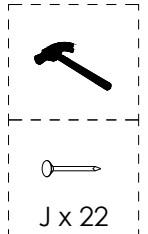
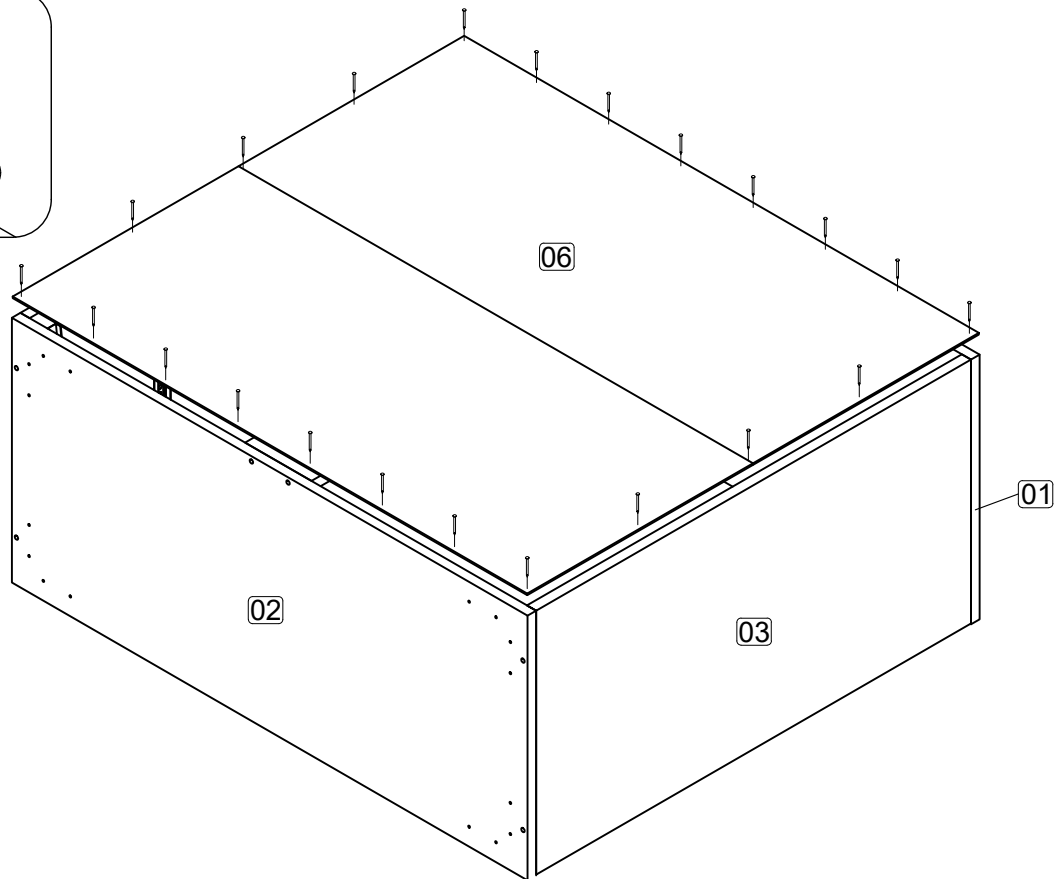
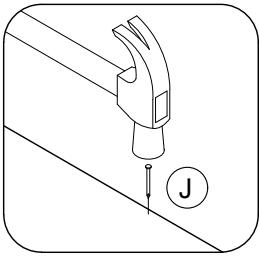
DO NOT use any power tools as this may damage the frame and will invalidate any claim.



Birlea
Suppliers of inspiration

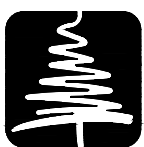
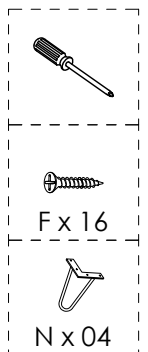
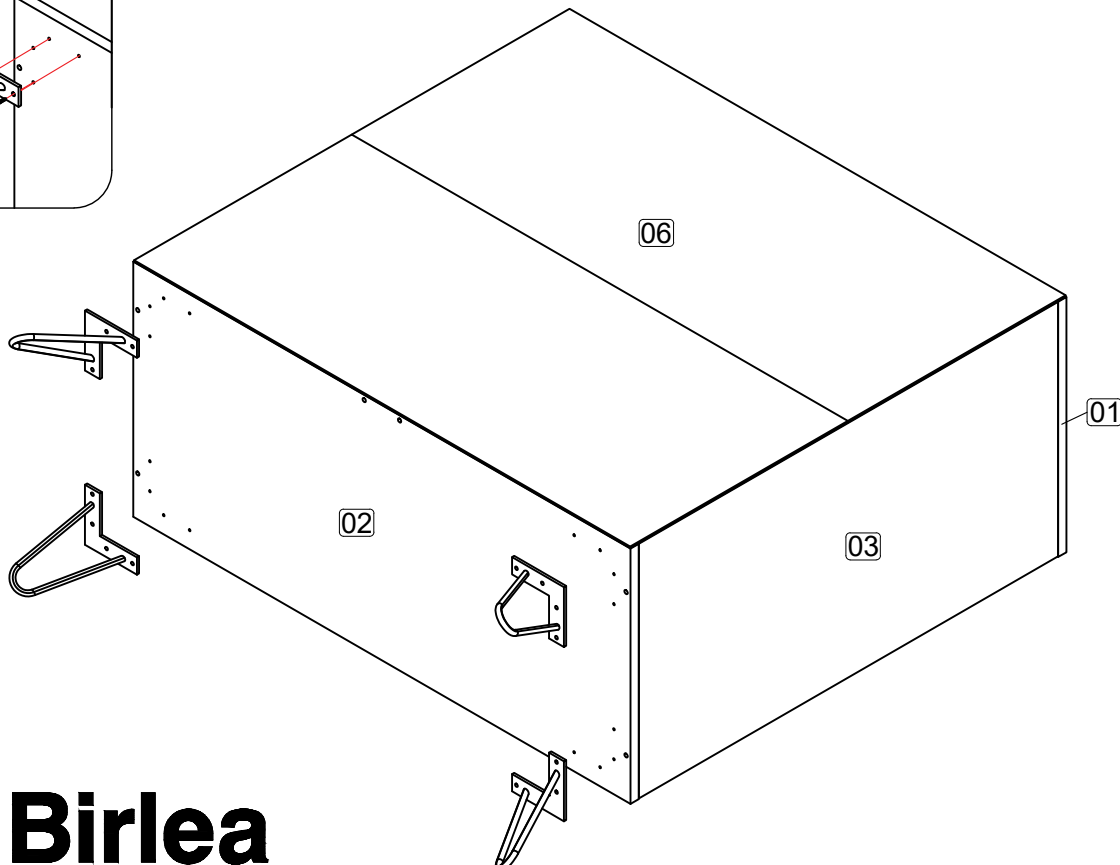
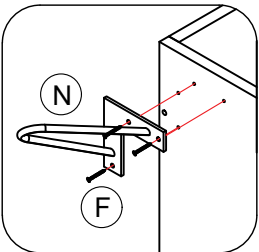
Step 4: Attach back panel (6) to entire body using hardware J with a hammer (not provided).

DO NOT use any power tools as this may damage the frame and will invalidate any claim.



Step 5: Attach hardware N to bottom panel (2) using hardware F with a screwdriver (not provided).

DO NOT use any power tools as this may damage the frame and will invalidate any claim.



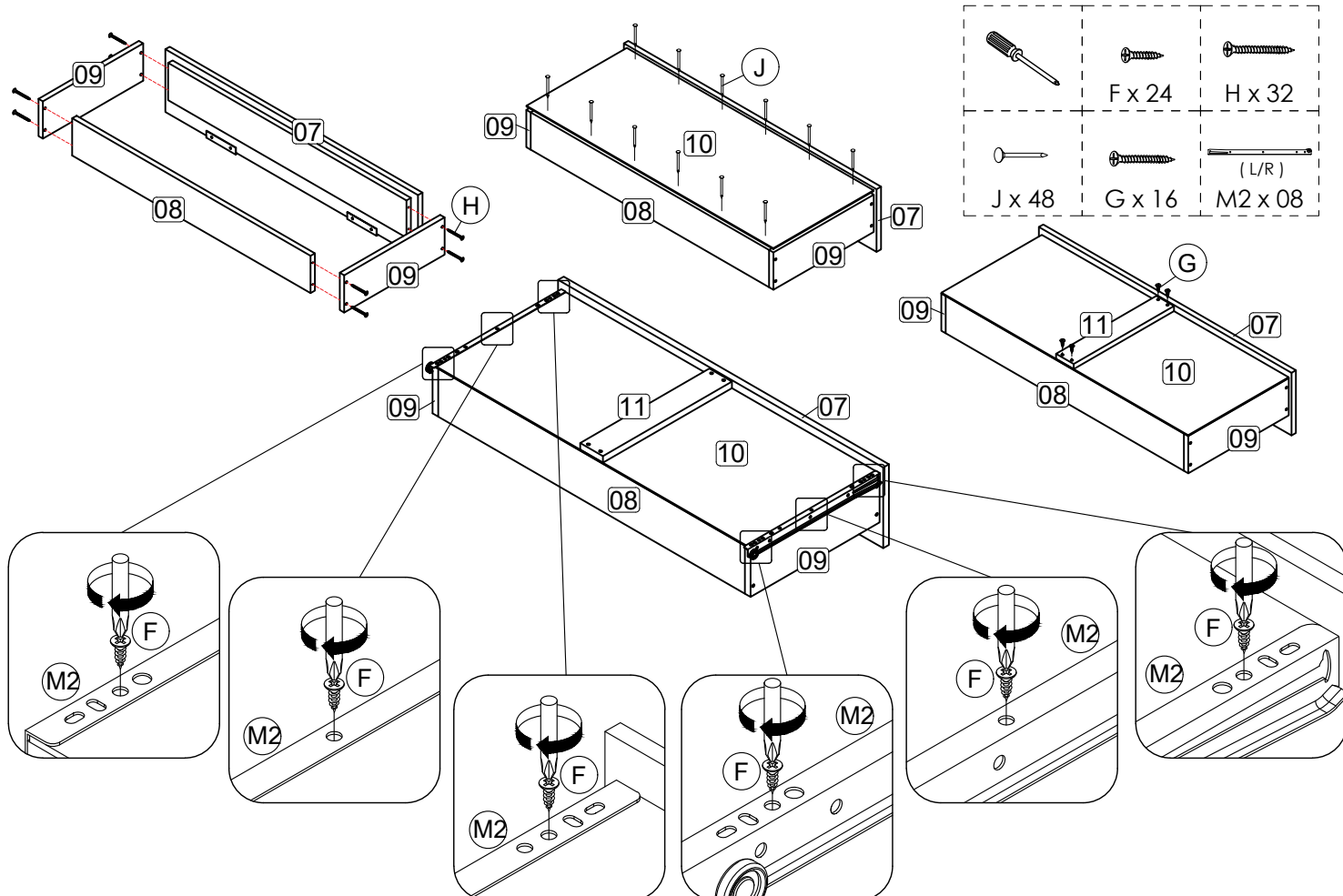
Birlea

Suppliers of inspiration

Step 6: Attach the Drawer Side (9) to the Drawer Front (7) and Drawer Back (8) using hardware H.

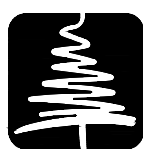
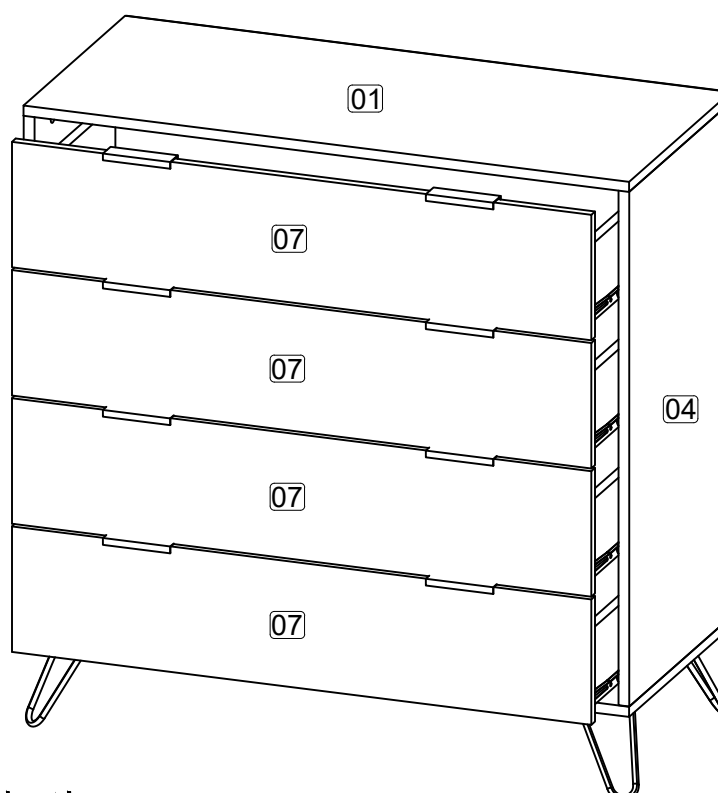
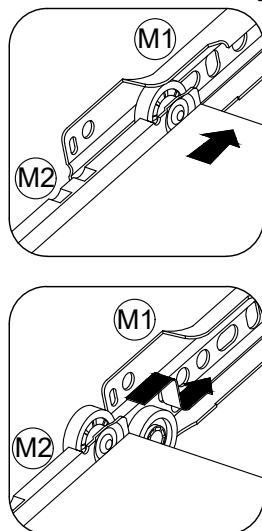
Then attach the Drawer Bottom (10) using hardware J. Secondly attach the Drawer Bone (11) to the Drawer Bottom (10) using hardware G then attach the Drawer Slides (M2) to the Drawer Bottom (10) using hardware F. Repeat this for the other three drawers.

DO NOT use any power tools as this may damage the frame and will invalidate any claim.



Step 7: Assemble the drawer in place along the drawer slides.

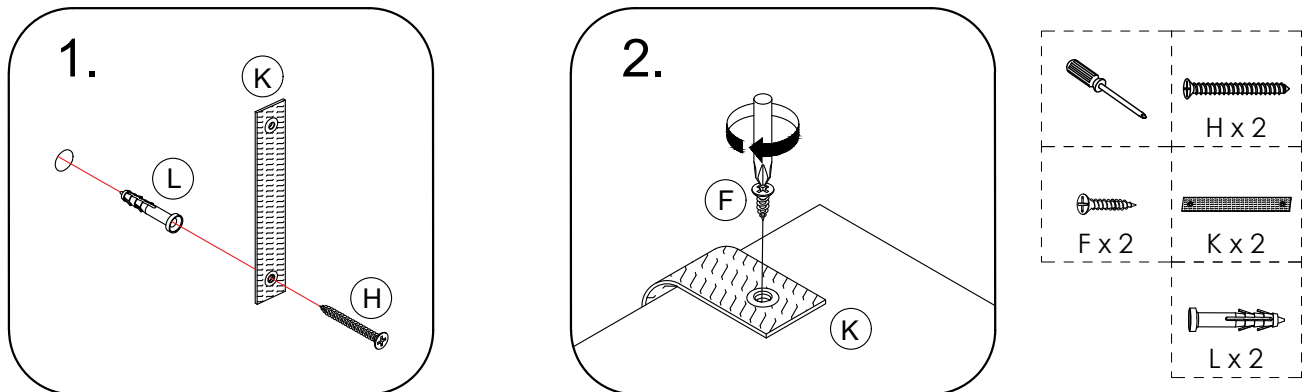
DO NOT use any power tools as this may damage the frame and will invalidate any claim.



Birlea

Suppliers of inspiration

Step 8: To secure the item to the wall use hardware H, K and L using a screwdriver (not provided). Then attach hardware part K to the panel (1) using hardware F with a screwdriver (not provided). **DO NOT use any power tools as this may damage the frame and will invalidate any claim.**

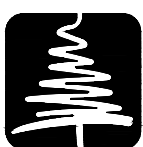


PLEASE NOTE that wall fixings are not supplied as different wall materials require different fixing devices. You must use fixings devices suitable for the type of wall you intend to mount product to. Ensure the head of any screw used has a diameter greater than the mounting hole and the fixing is safe and secure before use.

Birlea Furniture advise you use the wall straps provided to further enhance the safety of this product.

Additional Information:

- For complete product information, images and dimension diagrams please visit the website www.birlea.com
- If you have any issues with your item please contact the retailer directly you purchased it from who will be able to resolve any issues with Birlea.
- Why don't you send us photos of your assembled furniture to info@birlea.com to be shared in our #birleahome feature on instagram.



Birlea

Suppliers of inspiration