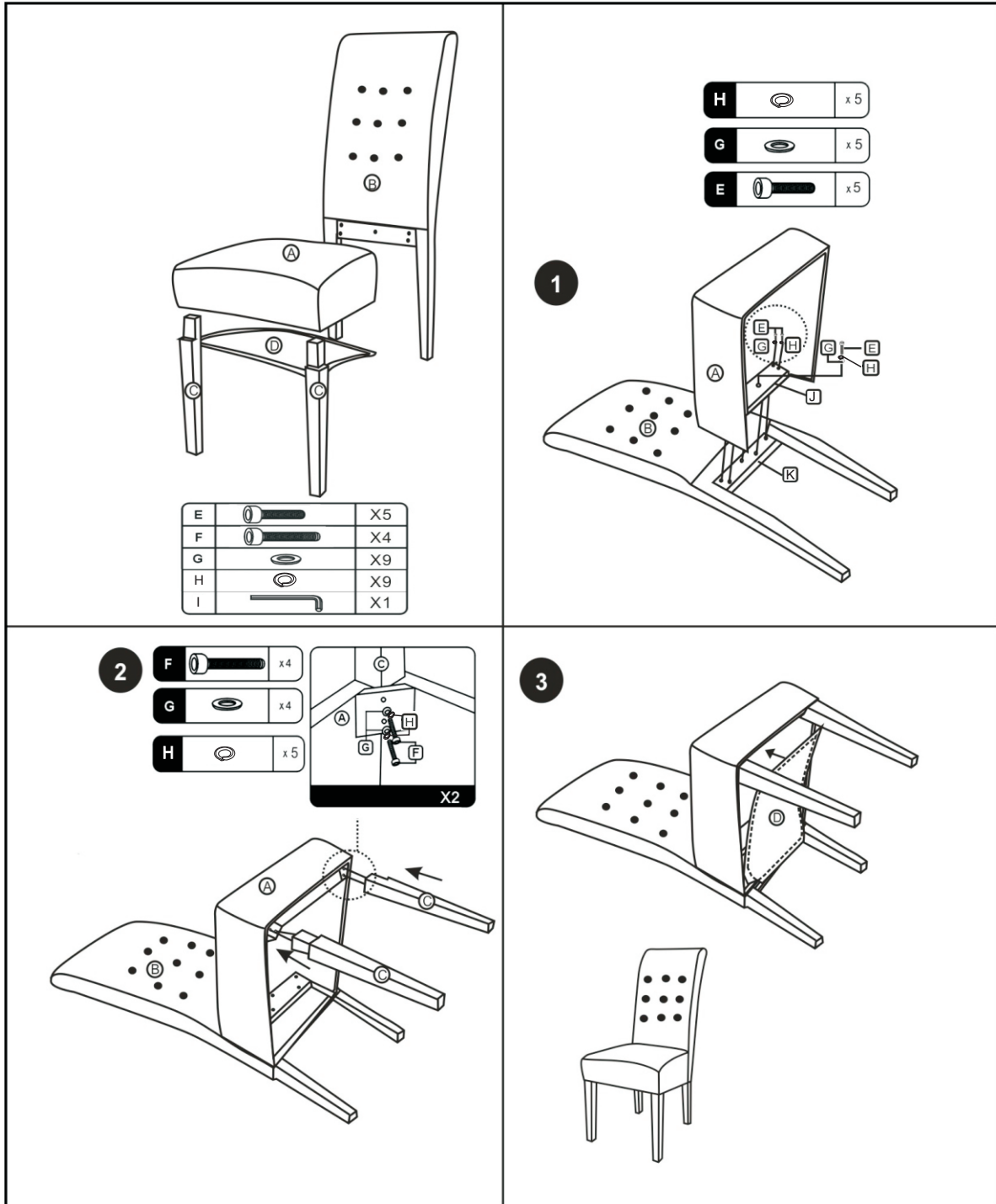


ASSEMBLY INSTRUCTION

ROMA DINING CHAIR

Please read before you continue further.

PLEASE KEEP THE ORIGINAL PACKAGING UNTIL THE ITEM IS FULLY ASSEMBLED AND IN PLACE. IN TIME UNLIKELY EVENT THAT YOU NEED TO RETURN YOUR PRODUCT, IT MUST BE RETURNED IN ITS ORIGINAL PACKAGING TO AVOID FURTHER DAMAGE. FAILURE TO FOLLOW THESE PROCEDURES, NO RETURNS WILL BE ACCEPTED.



PLEASE ENSURE ALL LEGS ARE LEVEL ON YOUR FLOOR BEFORE FULLY TIGHTENING THE SCREWS. ALL CHAIRS HAVE SOME VARIANCE IN THE ASSEMBLY PROCESS TO ALLOW FOR UNEVENNESS IN THE MAJORITY OF DOMESTIC HOME FLOORS.

WARNING:

- DO NOT STAND ON THE CHAIRS
- THESE CHAIRS ARE DESIGNED TO SEAT ONE PERSON ONLY PER CHAIR
- DO NOT USE THE CHAIRS UNLESS ALL THE BOLTS AND SCREWS ARE FIRMLY TIGHTENED
- AT LEAST EVERY FOUR MONTHS, PLEASE CHECK ALL BOLTS AND SCREWS TO MAKE SURE THEY ARE SECURELY TIGHTENED
- IF ANY PARTS ARE MISSING, BROKEN, DAMAGED OR WORN, STOP USING THIS PRODUCT IMMEDIATELY UNTIL REPAIRS ARE MADE USING FACTORY AUTHORISED PARTS
- FAILURE TO FOLLOW THESE WARNINGS COULD RESULT IN SERIOUS INJURY