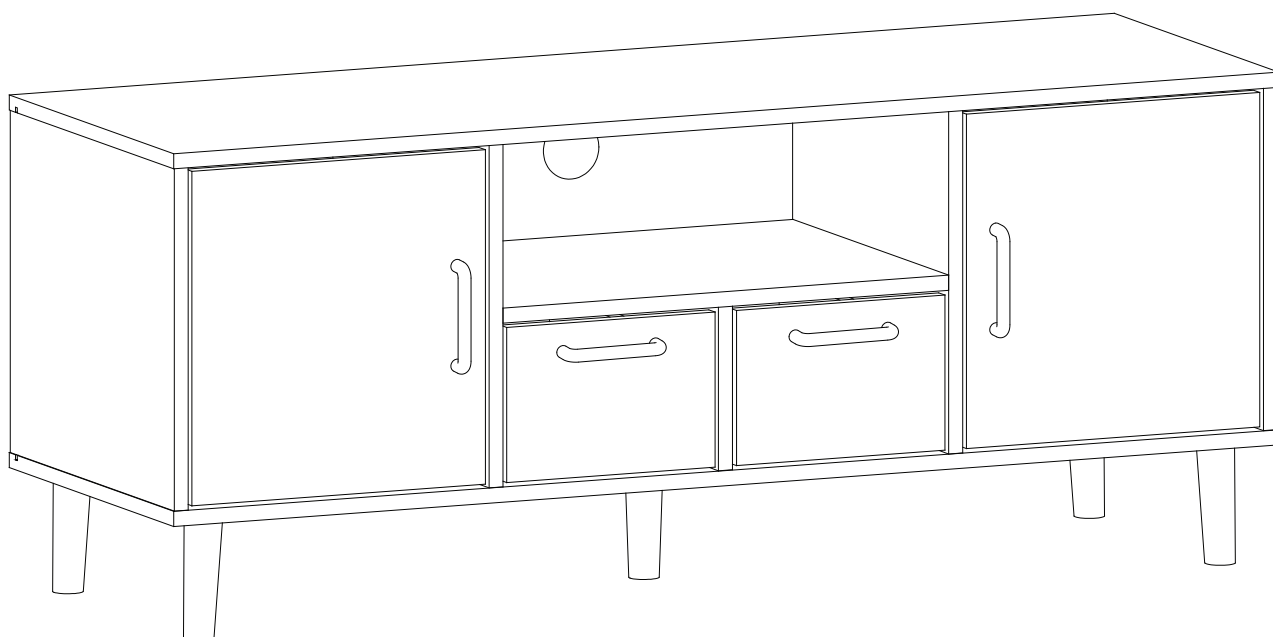


DELTA LARGE TV UNIT ASSEMBLY INSTRUCTIONS

Thank you for purchasing the **LARGE TV UNIT**.
Please read the instructions carefully to ensure safe operation of the product.



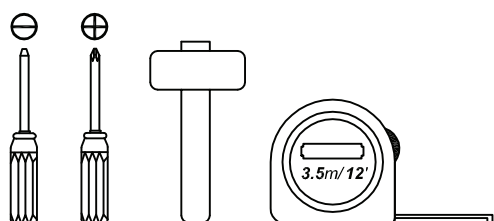
Size: (W)1190 x (D)390 x (H)490mm
Colour: White / L.Grey / Taupe / D.Grey

PLEASE READ this sheet prior to assembly to familiarise yourself with the various stages of construction.

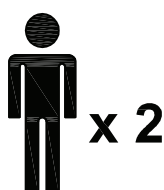
Carefully open the pack supplied and check the contents against the parts and fittings check list. Do not destroy any of the packaging until you are certain that you have all the necessary parts for the assembly.

CAUTION: There are small components used in the construction of this unit. These loose items should be kept away from young children whilst assembling your unit to avoid the danger of choking hazards.

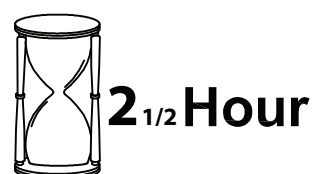
Tools Required



Person Required



Approximate Assembly Time



IMPORTANT - READ CAREFULLY - RETAIN THESE INSTRUCTIONS FOR FUTURE REFERENCE.

INFORMATION

- This product is intended for a maximum weight of **33kgs** and drawer load capacity **5kg** each.
Do not exceed this weight.
- Due to the size of this product we recommend that is assembled in the room intended for use.
- When you ready to start, make sure that you have the right tools, plenty of space and a clean, dry area for assembly
- Unwrap all packaging materials and place the components on top of the carton box or not on a clean floor to prevent it from scratching.
- Check the pack and make sure you have all the parts listed.
- Ensure that this product is fully assembled as illustrated before use.
- Check all screws or bolts are tightened and inspect regularly.
- This product should only be used on firm, level ground.
- Keep small parts out of reach of children.
- Make sure the legs remain in contact with the ground.
- Tools not included.

WARNINGS

- DO NOT use power tools to construct this product.
- DO NOT over tighten screw or bolts.
- DO NOT use this product if parts are missing, damage or worn.
- DO NOT stand or sit on this product.

CARE INFORMATION

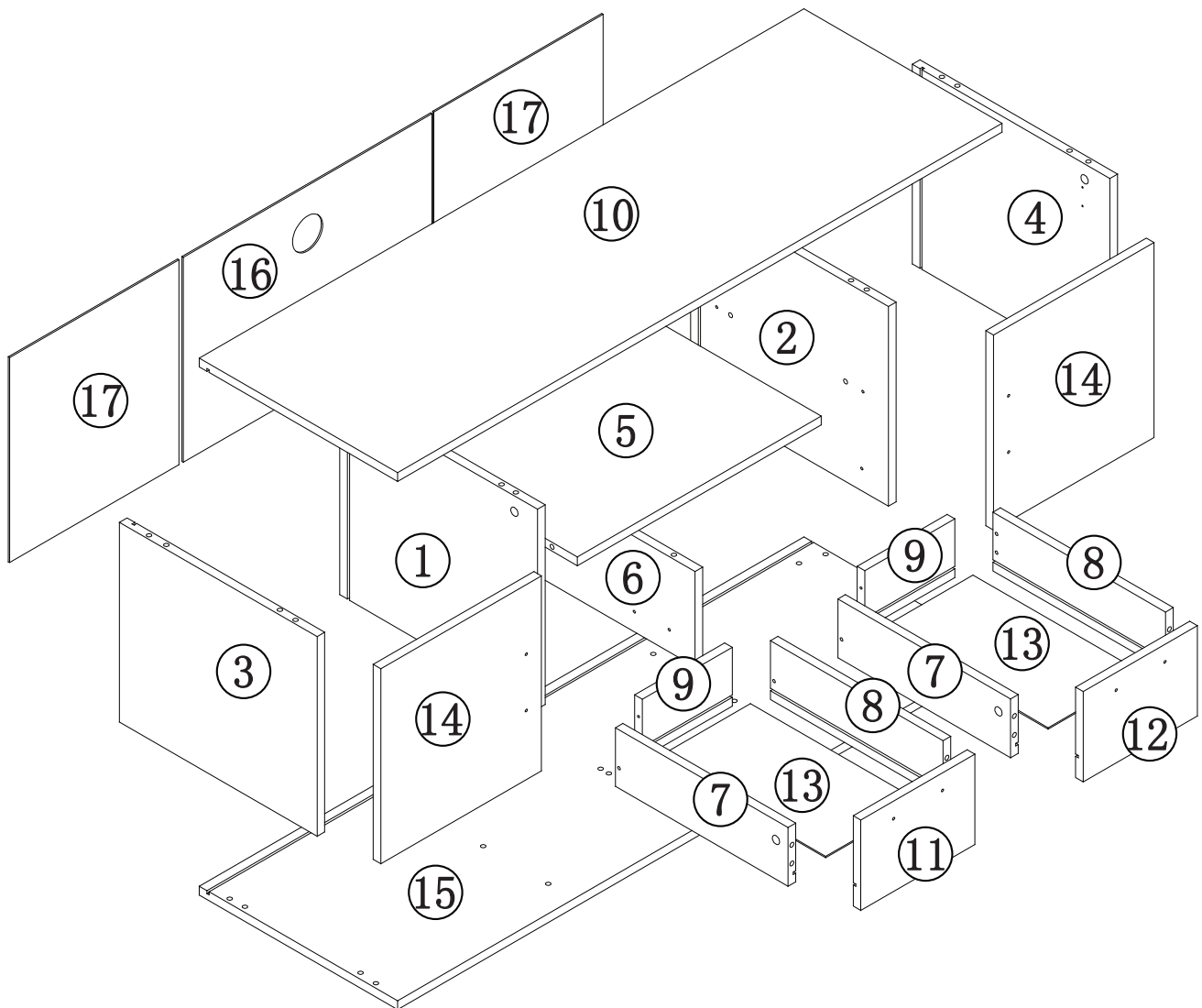
- Never use scourers, abrasives or chemical cleaners.
- To clean wipe with a sponge and soapy water. Do not use solvent based cleaners or detergents as they can bleach or damage the product.

Please check the pack contents before assembling the product. If any components are missing, please contact your retailer. The fittings pack contains small items that should be kept away from small children.

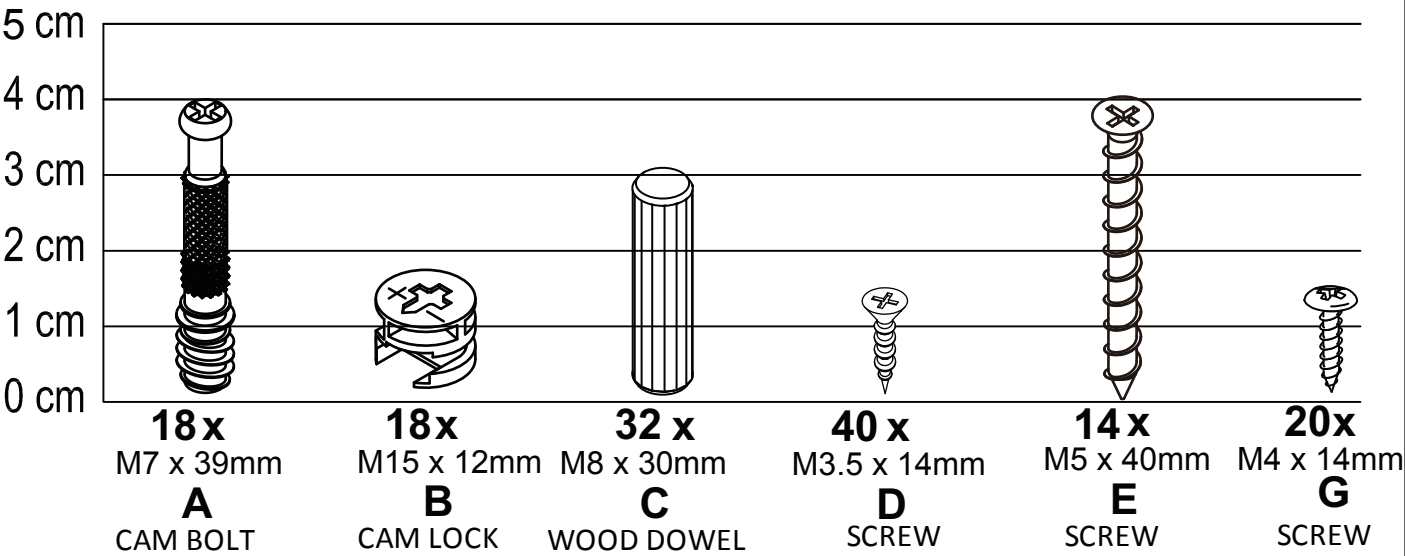
Parts

CODE	PART NAME	QTY
1	CENTER PANEL(L) 15 x 390 x 340mm	1
2	CENTER PANEL(R) 15 x 390 x 340mm	1
3	SIDE PANEL (L) 15 x 390 x 340mm	1
4	SIDE PANEL (R) 15 x 390 x 340mm	1
5	SHELF 15 x 369 x 480mm	1
6	CENTER PANEL(BOTTOM) 15 x 369 x 162.5mm	1
7	DRAWER SIDE (L) 15 x 115 x 330mm	2
8	DRAWER SIDE (R) 15 x 115 x 330mm	2
9	DRAWER BACK 15 x 115 x 177mm	2
10	TOP PANEL 15 x 390 x 1190mm	1

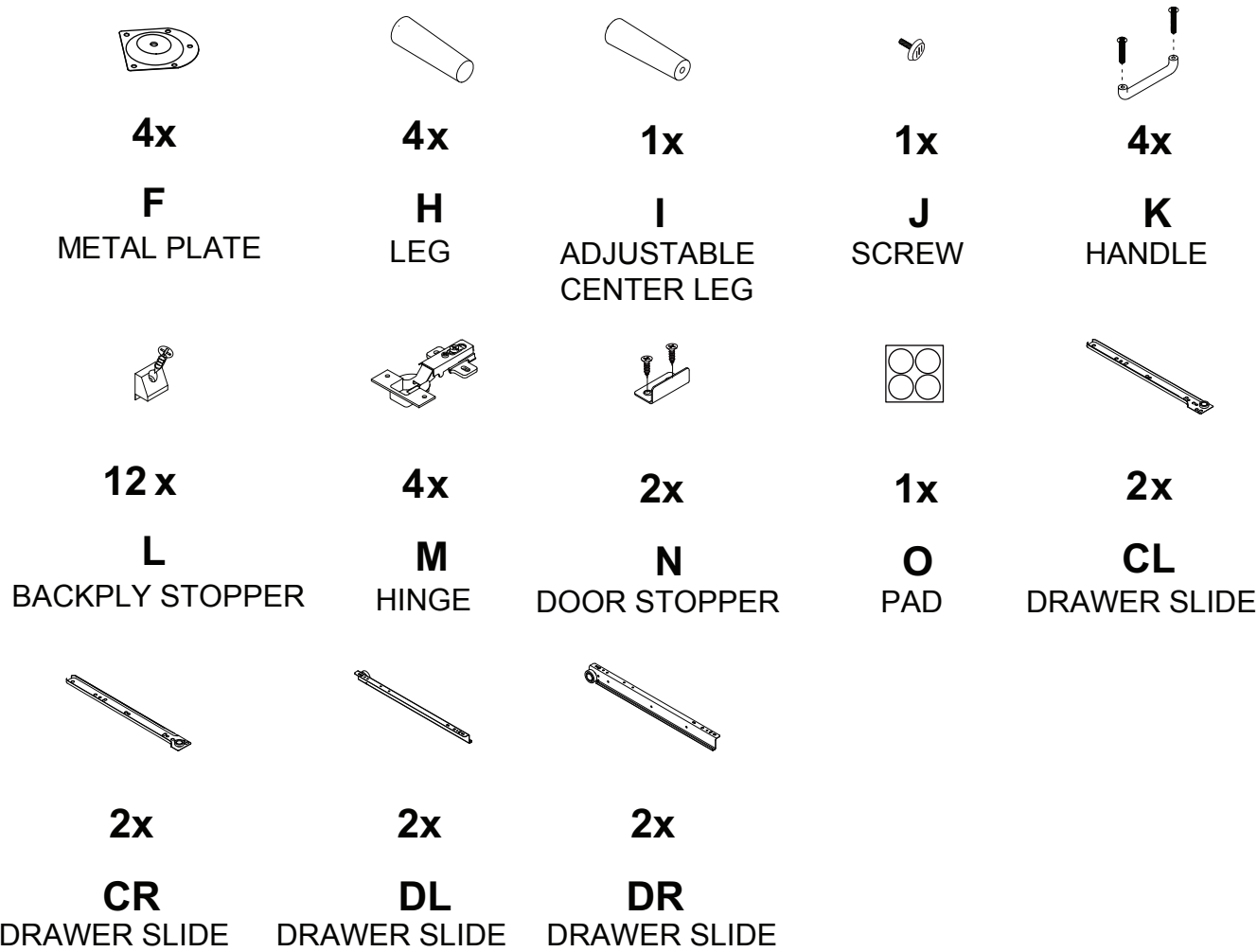
CODE	PART NAME	QTY
11	DRAWER FRONT (L) 15 x 158 x 228mm	1
12	DRAWER FRONT (R) 15 x 158 x 228mm	1
13	DRAWER BOTTOM 2.5 x 322 x 186mm	2
14	DOOR 15 x 316 x 332mm	2
15	BOTTOM PANEL 15 x 390 x 1190mm	1
16	BACK PANEL(CENTER) 2.5 x 489 x 349mm	1
17	BACK PANEL(SIDE) 2.5 x 348 x 332mm	2

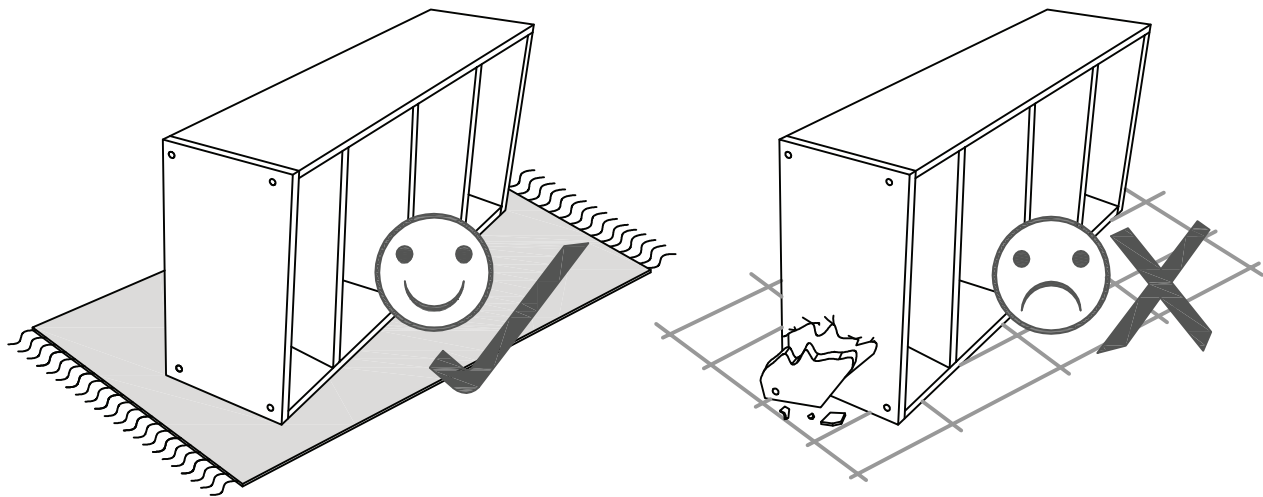


Fixings (to scale)



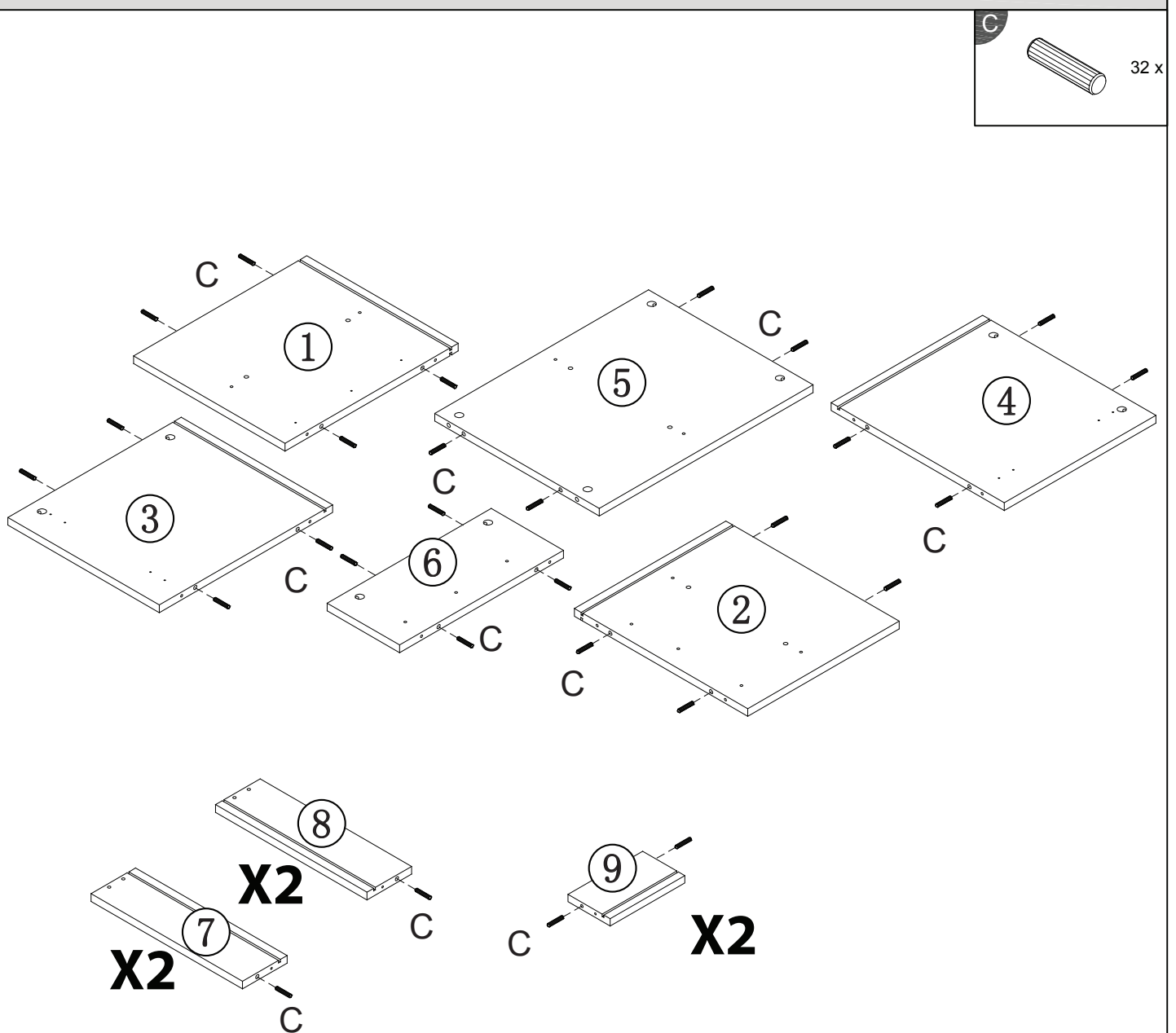
Fixings (not to scale)



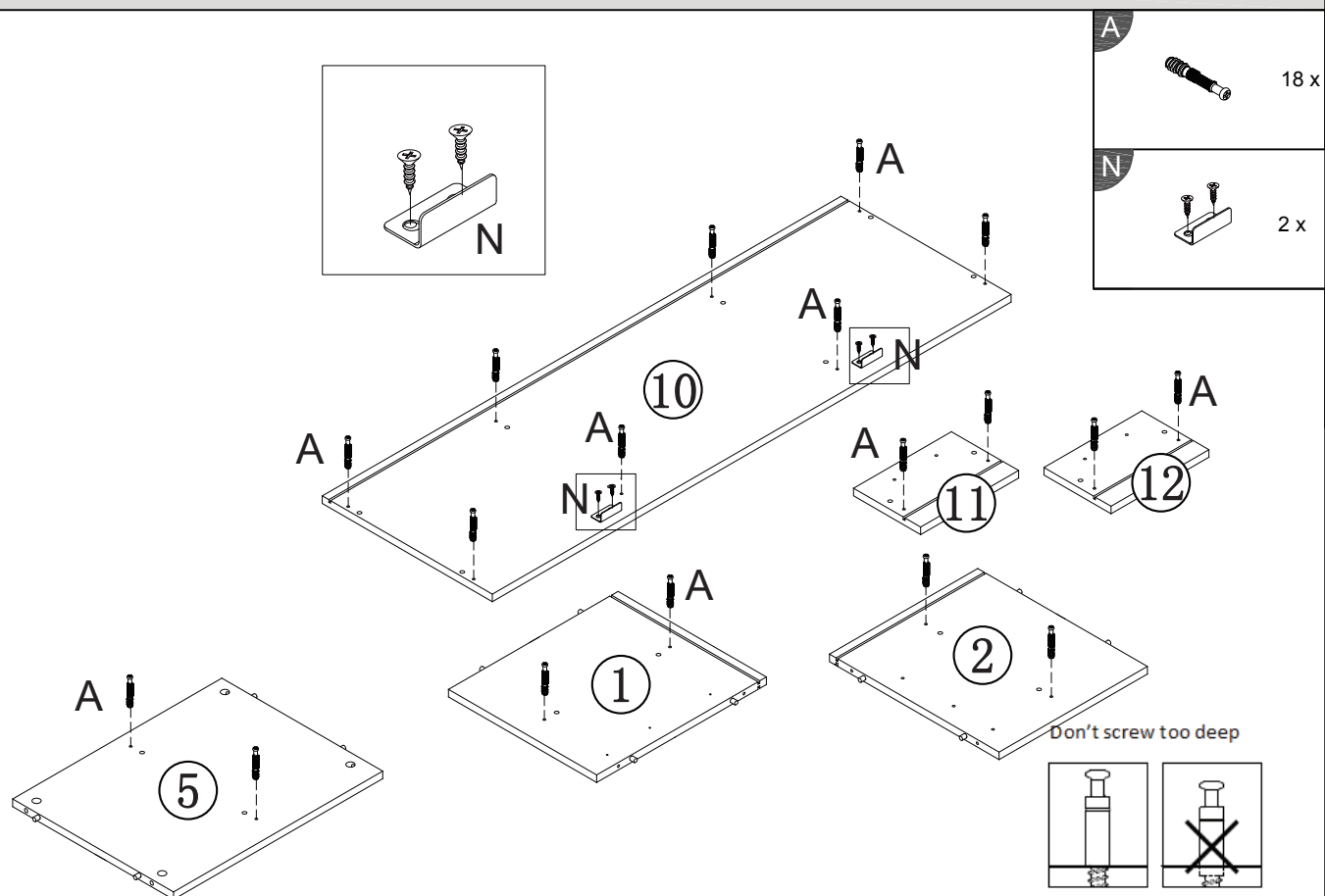


Layout Parts on Soft Surface

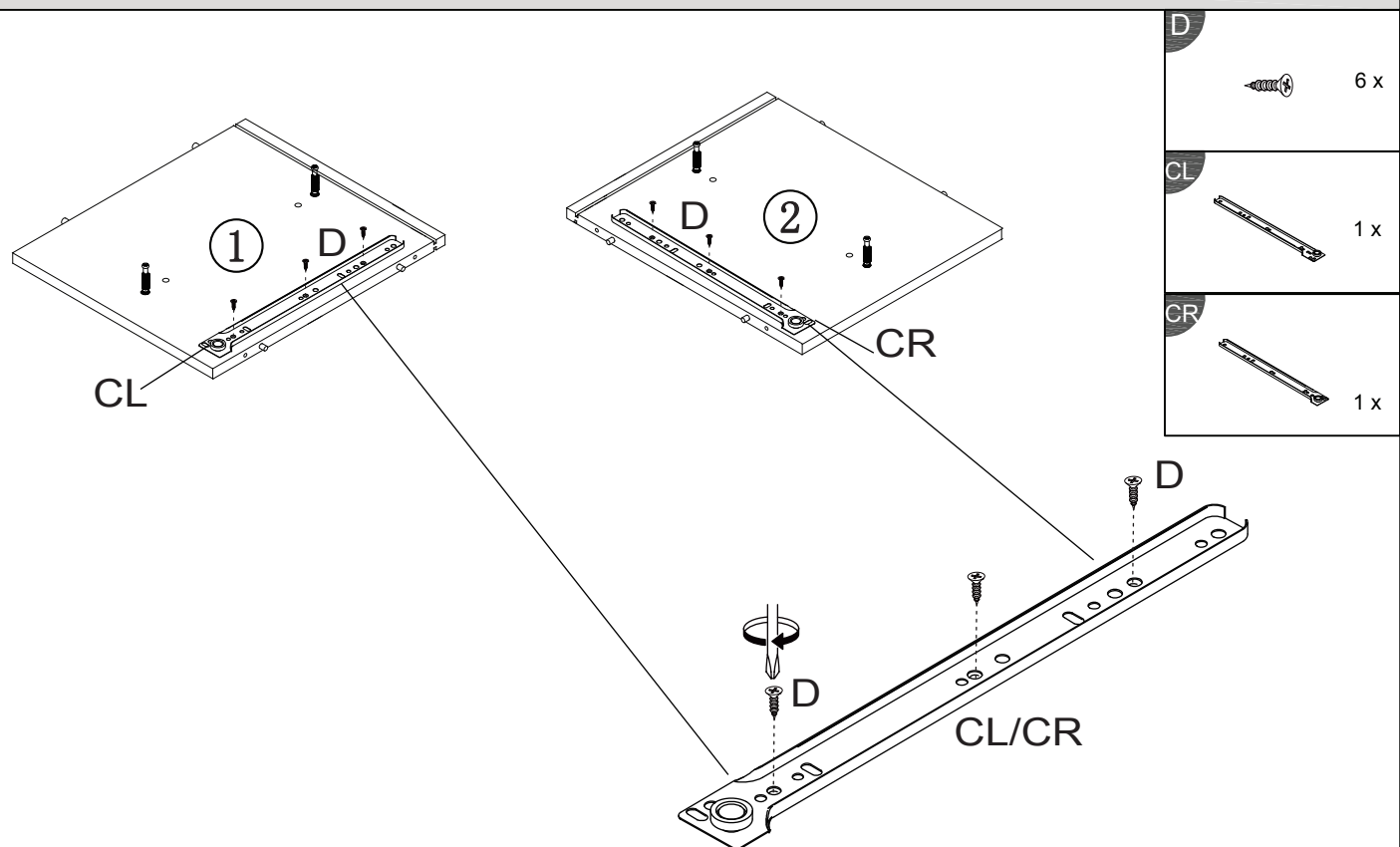
STEP 1



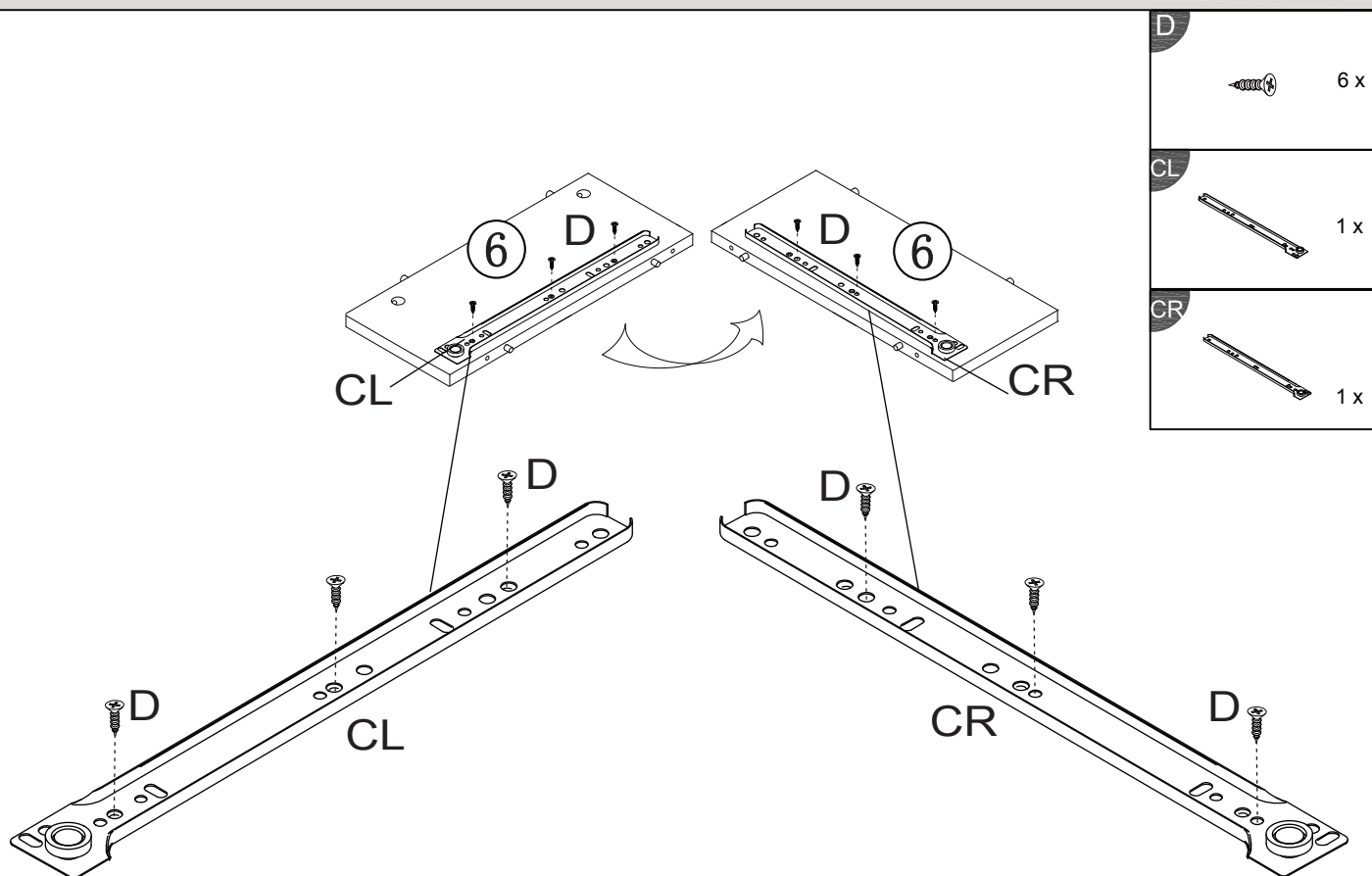
STEP 2



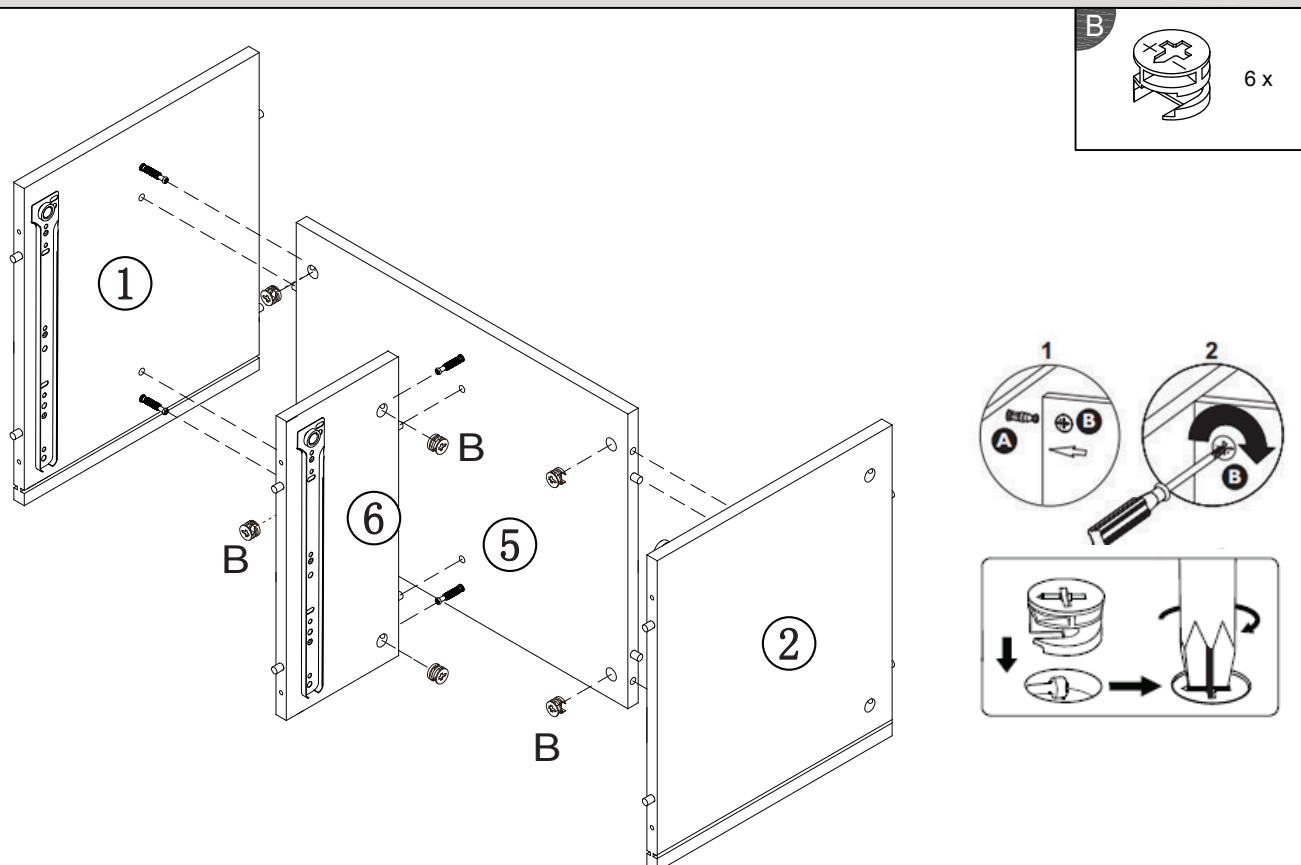
STEP 3



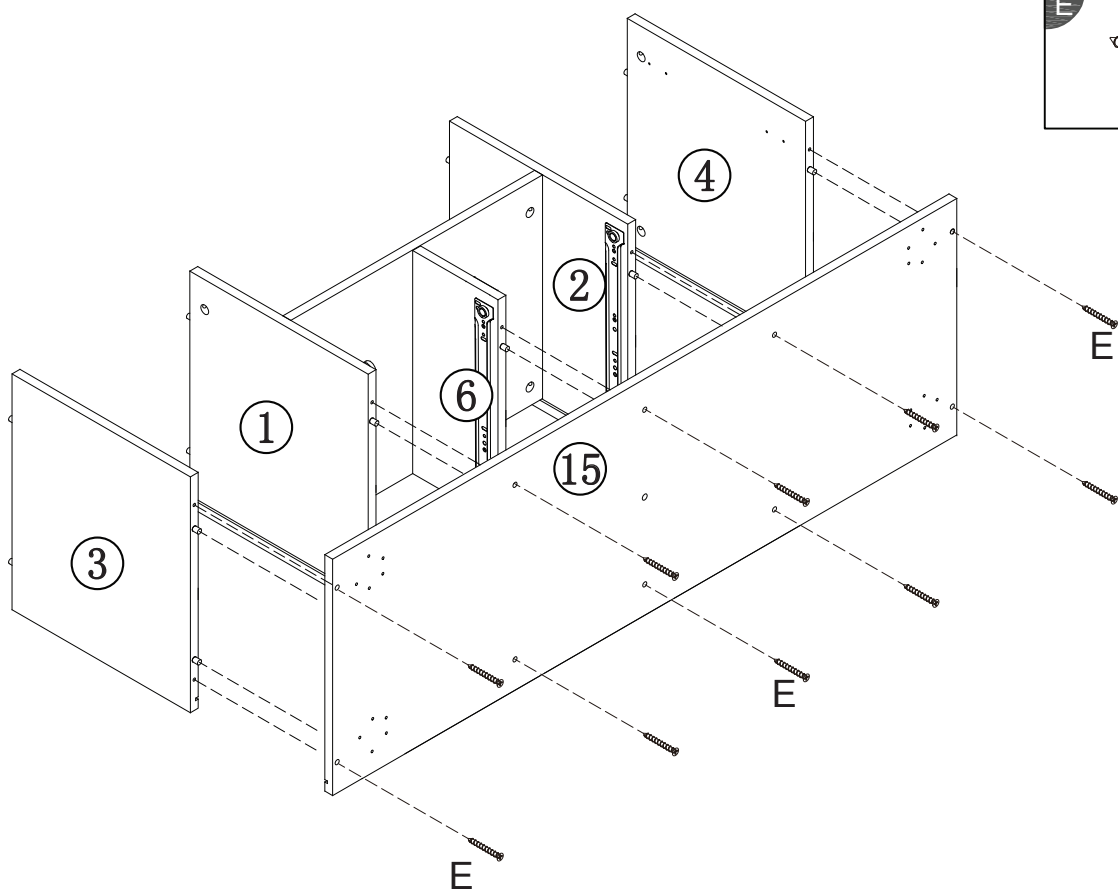
STEP 4



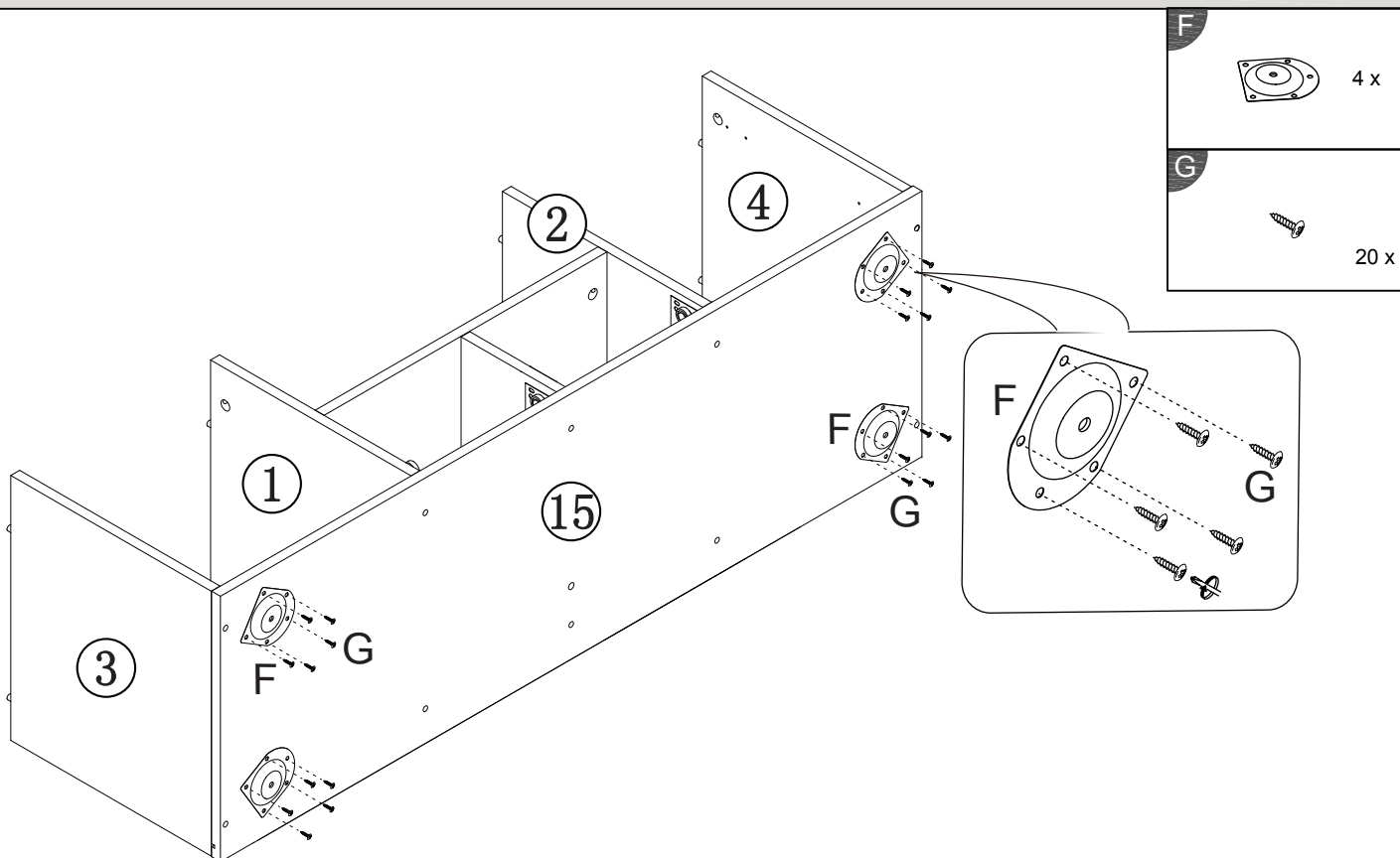
STEP 5



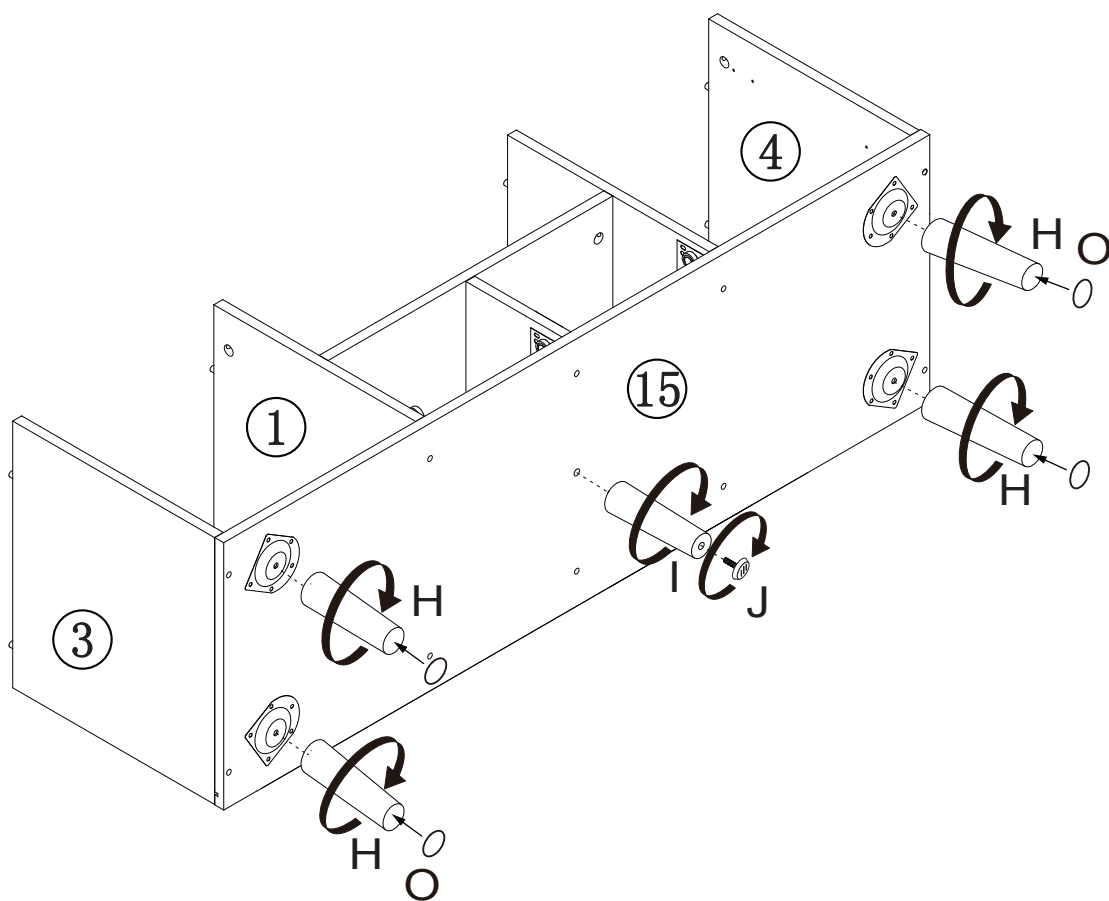
STEP 6

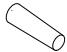
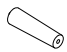




STEP 7

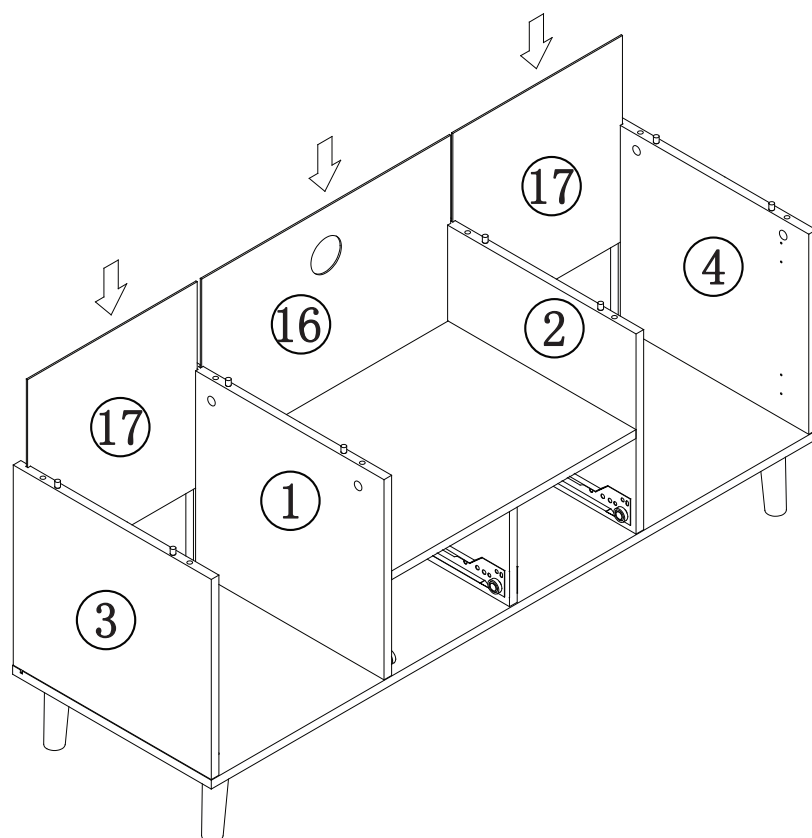


STEP 8

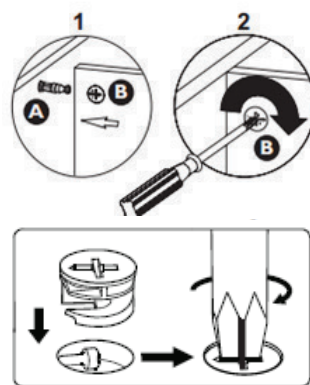
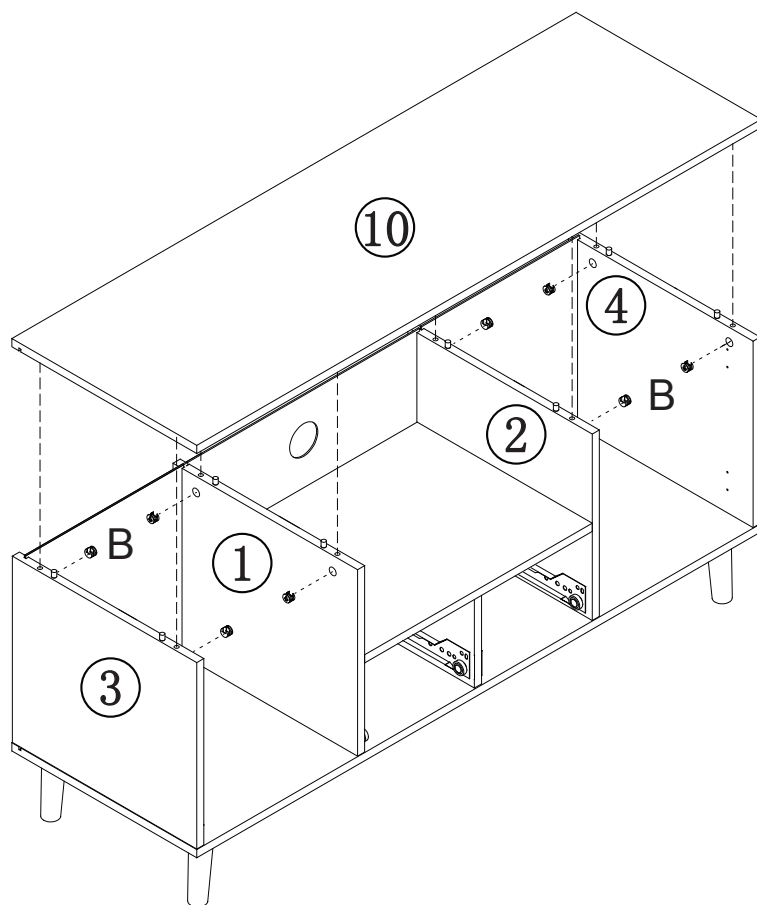


H		4 x
I		1 x
J		1 x
O		1 x

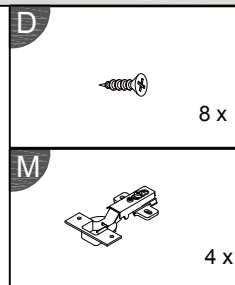
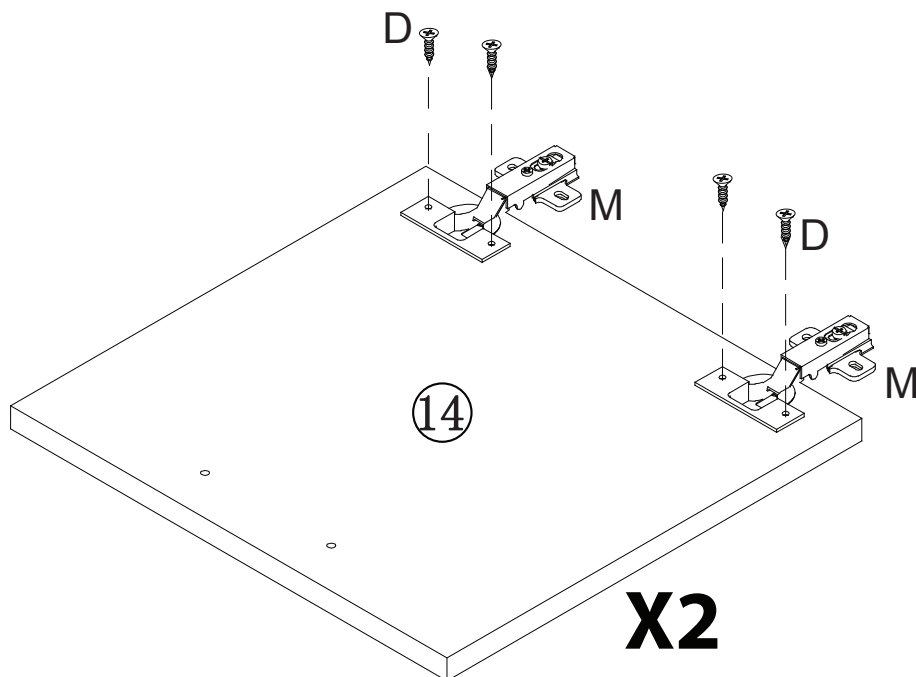
STEP 9



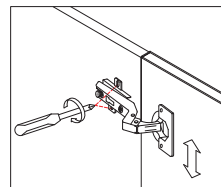
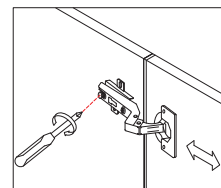
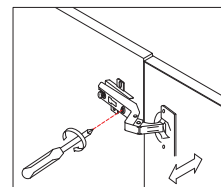
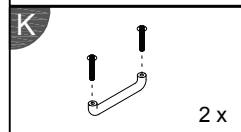
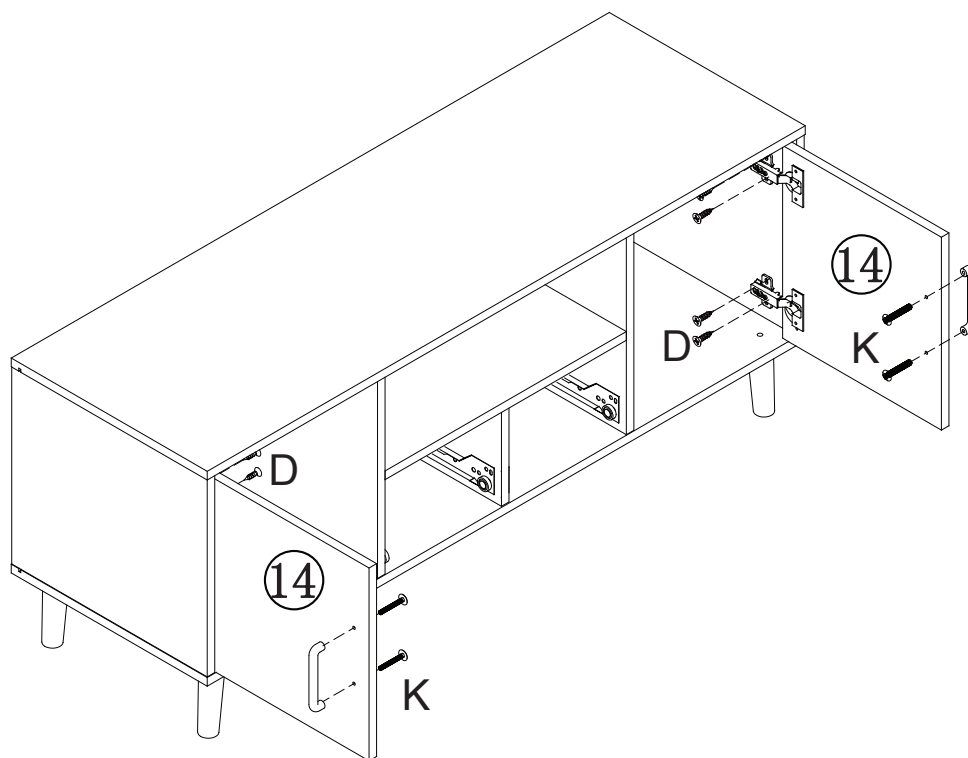
STEP 10



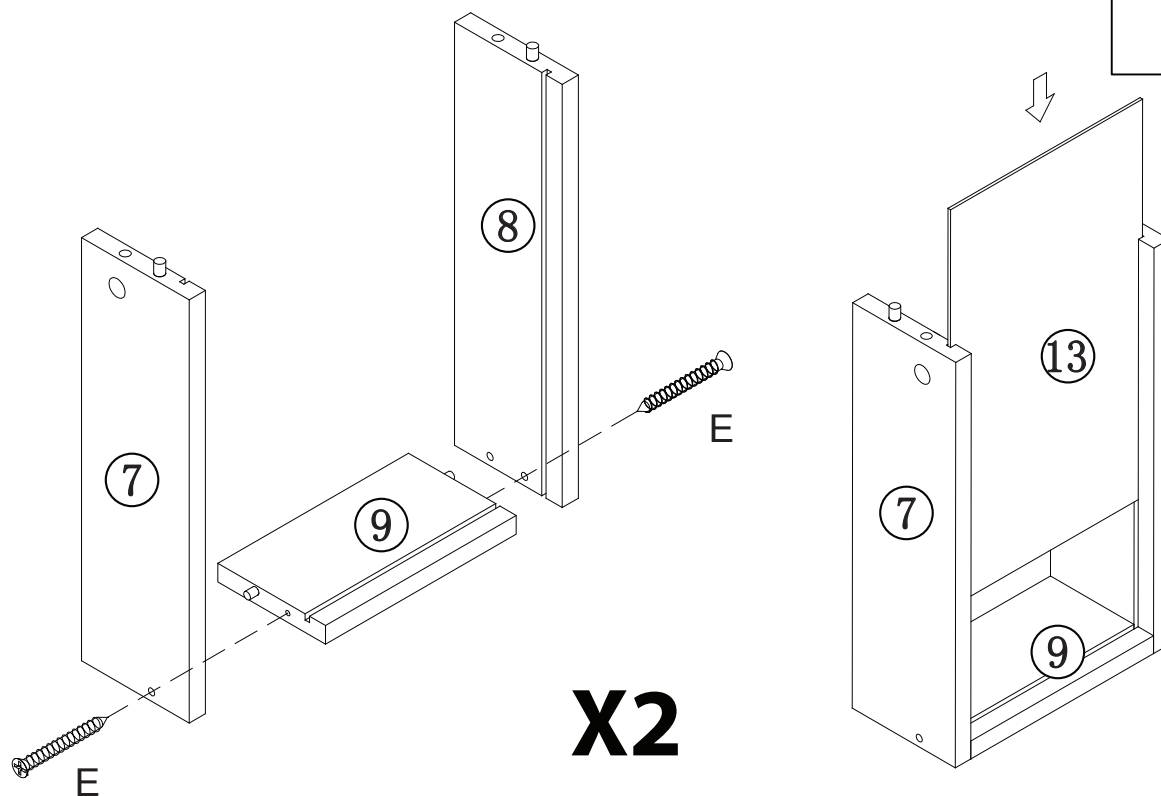
STEP 11



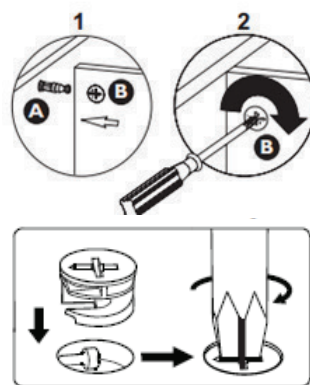
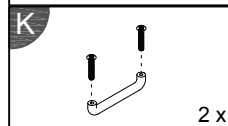
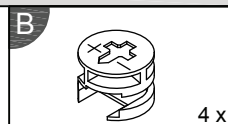
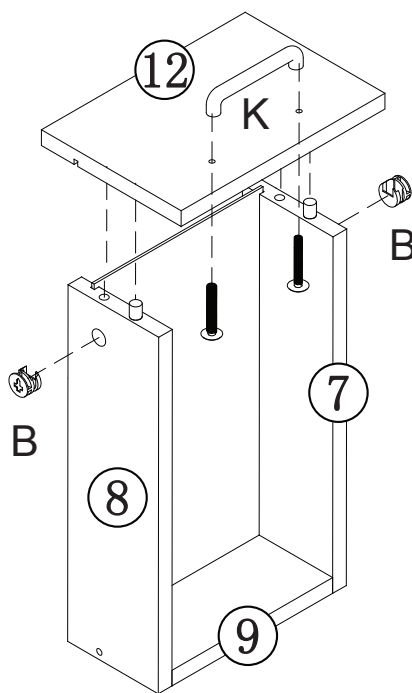
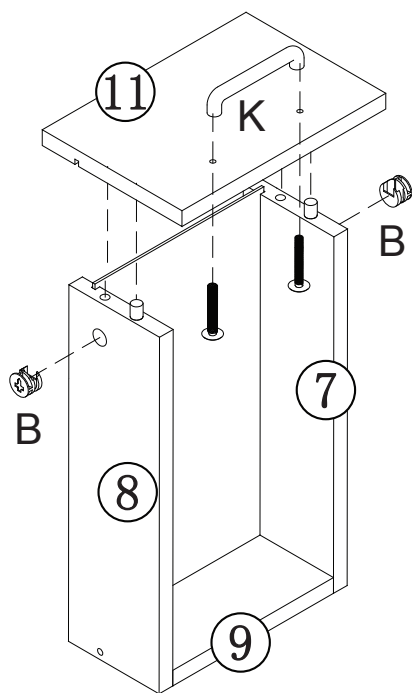
STEP 12



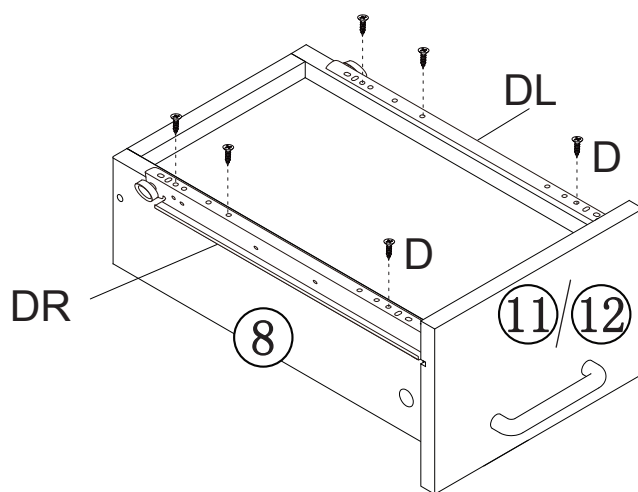
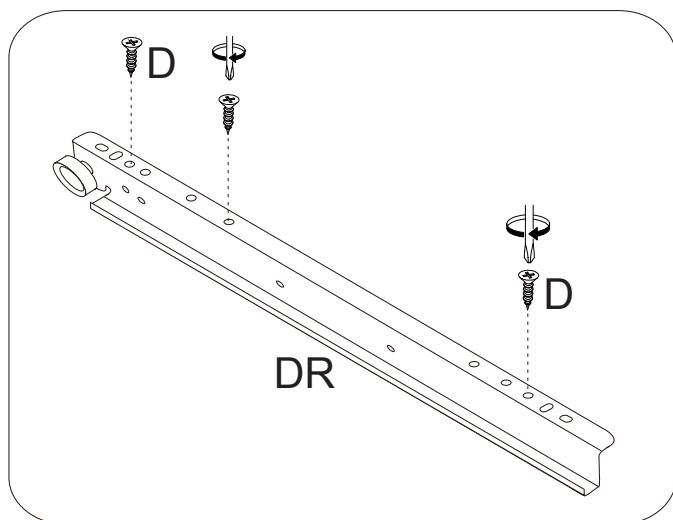
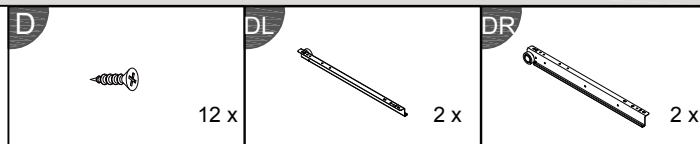
STEP 13



STEP 14

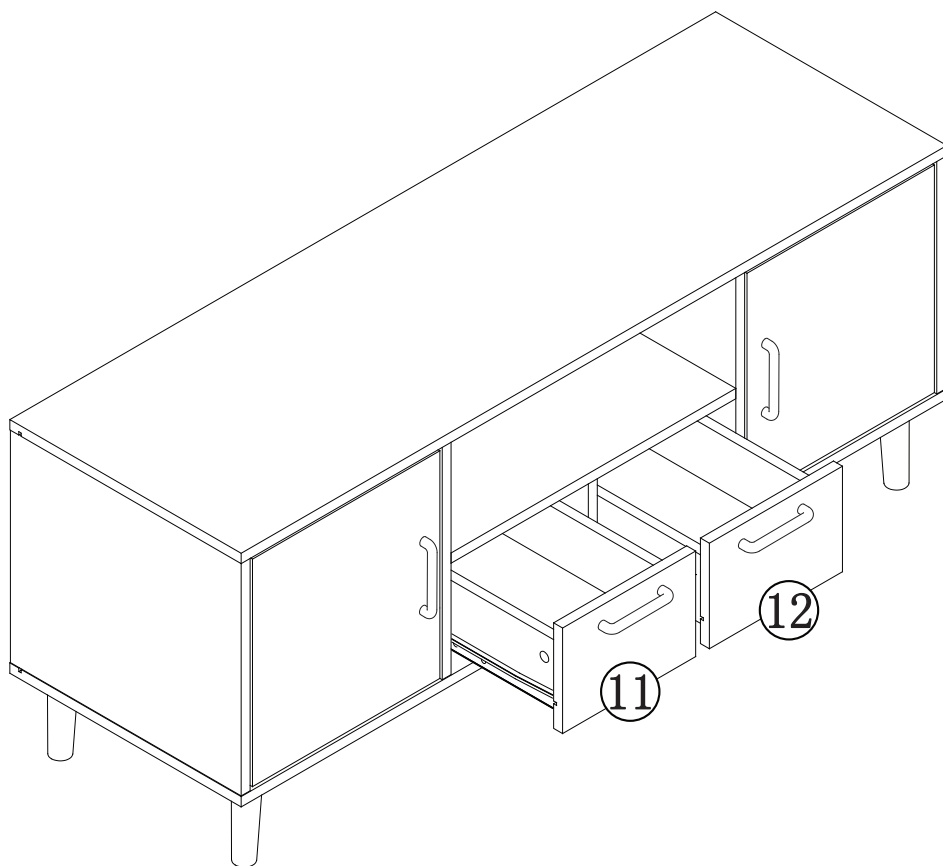


STEP 15

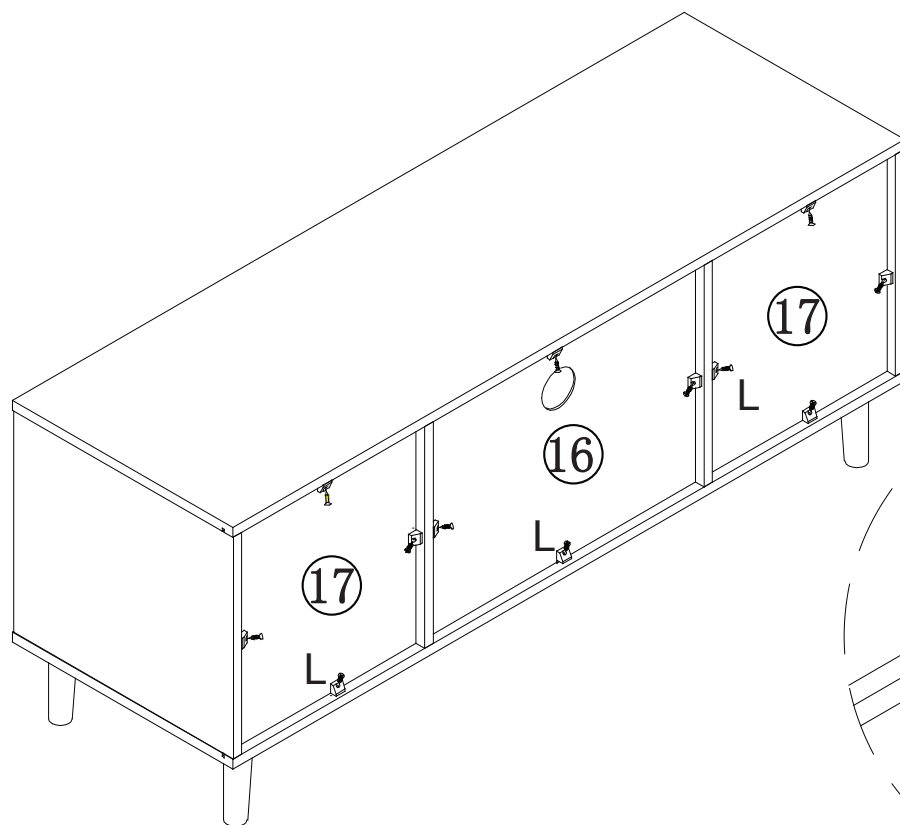


X2

STEP 16



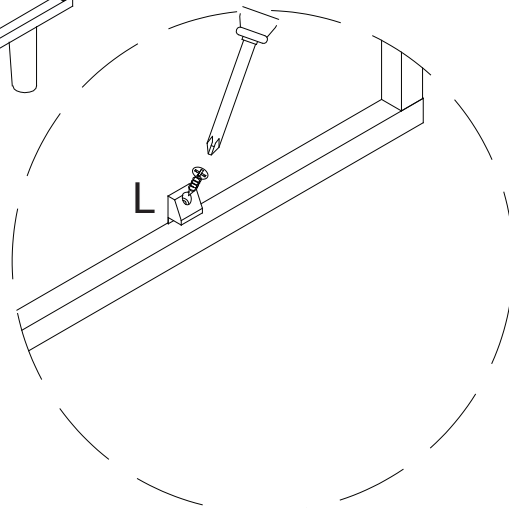
STEP 17



L



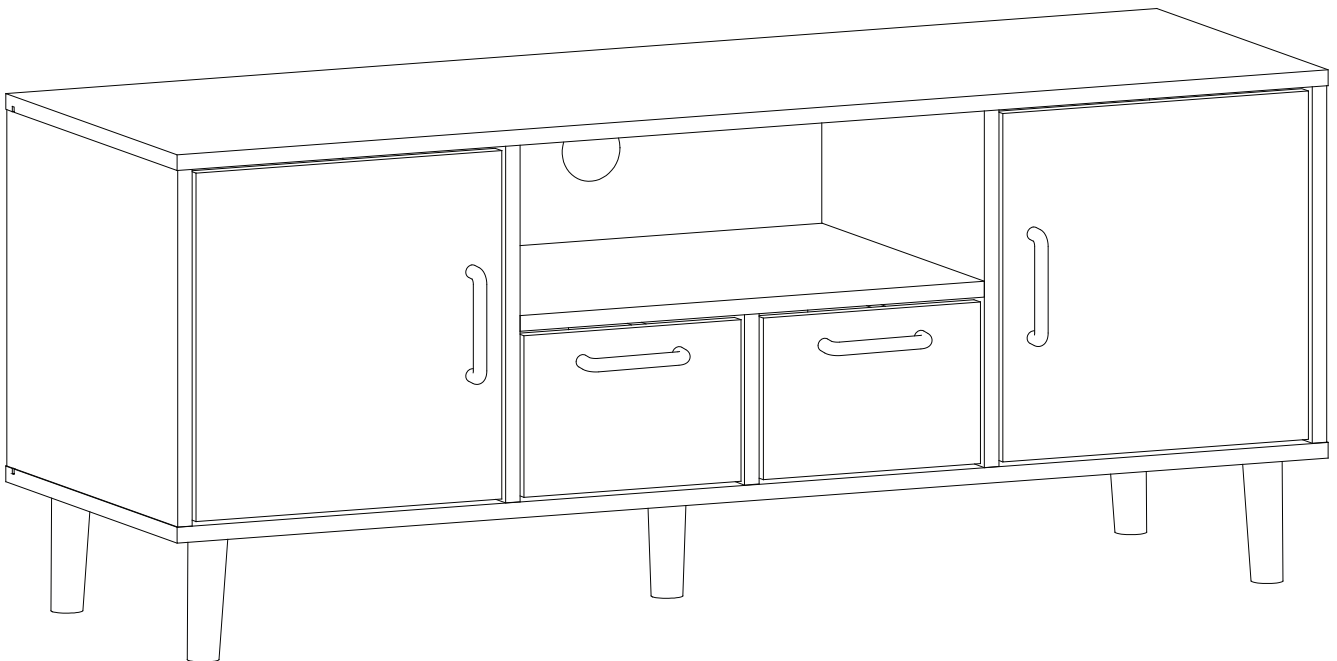
12 x



Complete Assembly

Your **DELTA LARGE TV UNIT** is now completely assembled

Periodically check to ensure that the components are in their proper position, free from damage. Also, make sure the connectors are tight and secure.



Keep instructions for future reference

