

Assembly Instructions for Ottoman Bedstead (4'6)

Thank you for your purchase.

Please read the instructions carefully to ensure safe operation of the product.

NOTE, you will need 2 people to lift and assemble all parts of this bed frame safely.

Please open the packaging carefully, all parts needed will be located in the packaging.

Tools required. - 1 x Spanner (Supplied)

- 1 x Allen Key (Supplied)

CAUTION: Keep children away from the work area until the bed is complete

Packaging should not be left around children and must be disposed of immediately.

INFORMATION

Due to the size of the product it is advised that it is assembled in the room intended for use. When you are ready to start, make sure you have the correct tools & plenty of space to work. Open the accessory pack and ensure you have all the parts needed. Ensure that this product is fully assembled before use. Check all bolts are tightened and inspect regularly. Please dismantle for transportation.

WARNINGS

DO NOT use power tools to construct this product.

DO NOT over tighten the bolts.

DO NOT stand on this product.

DO use caution when operating; this bed uses a pressurised mechanism.

DO keep hands and fingers clear of the mechanism when opening and closing the bed.

Only use the storage compartment when the frame is fully raised in the up position.

Please note, the warranty only covers use and assembly of product as directed, any damage to the bedframe which has been deliberate or accidental will void the warranty and replacements and repairs will be chargeable.

PARTS CHECKLIST



2 x Metal Clamps



2 x Floor Panels



1 x Ottoman Slatted Base



6 x M8 x 45 Mushroom
Top Bolt



6 x Serrated Edge
Nut



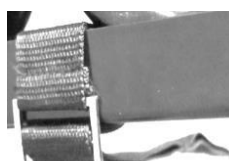
4 x M8 x 50 Flat Top
Inner Hex Bolt



4 x Hex Nut



1 x Handle



1 x Lifting Strap

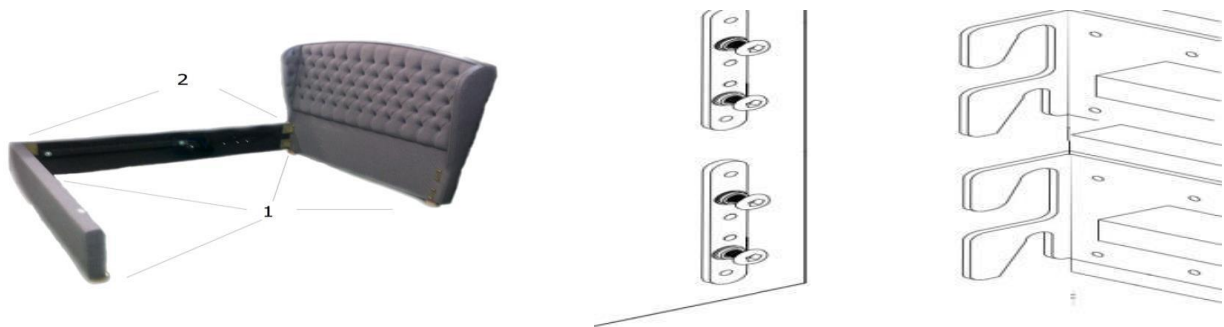


1 x Allen Key

Before assembling the product attach the legs (Dependent on model) to the head and the foot boards.

Step 1

Slide one of the side rails onto the bolts of the head & foot ends of the bed, secure with the bolts provided.



Step 2

This leaves one side of the bed open to slide the floor panels in to position, ensure they are lined up against the corners.

Step 3

Attach the other side to the head & foot end as in step 1 (**Ensure all 4 corners are tightened securely**)



Step 4

Unpack the slatted frame work and lay on an even floor, take one of the metal clamps and place over the frame, using 2x M8 Flat Top Inner Hex bolts and 2x Hex Nut secure the clamps using the provided Allen Key to hold the bolt in place and the provided Spanner to tighten the nut (pic A). Repeat on the opposite side of the slatted frame. Take the mattress stopper handle (the headboard end of the bed) and locate in the provided holes (pic B). Finally attach the strap to the bottom of the slatted frame. Opposite end to the handle (pic's C & D)

A

B

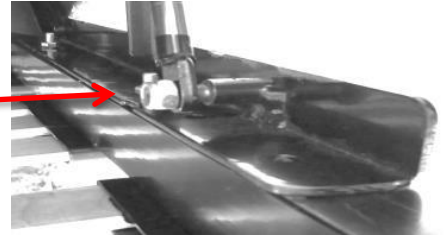
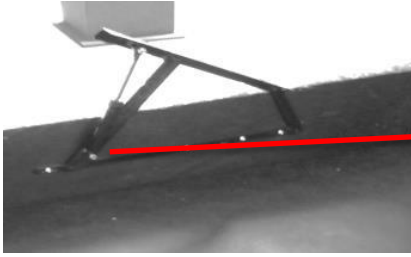
C

D



Step 5

Raise the Metal arms on the bed, stretch out the gas pistons and using the bolts attached to the piston bolt them in to place on the metal arms.



Secure and tighten all bolts before moving onto the next step

Step 6

Sit the slatted base onto the bed frame and line up the holes to fit on top of the metal arms. Insert the M8 x 45 Mushroom Top bolts into the holes and attach with Serrated Edge nuts (Ensure the bolts are tightened)



Check that all bolts are tightened, lower the framework and introduce the mattress.



Enjoy your luxury Ottoman Bedstead!